



**STANDARD DETAILS**  
**TABLE OF CONTENTS**

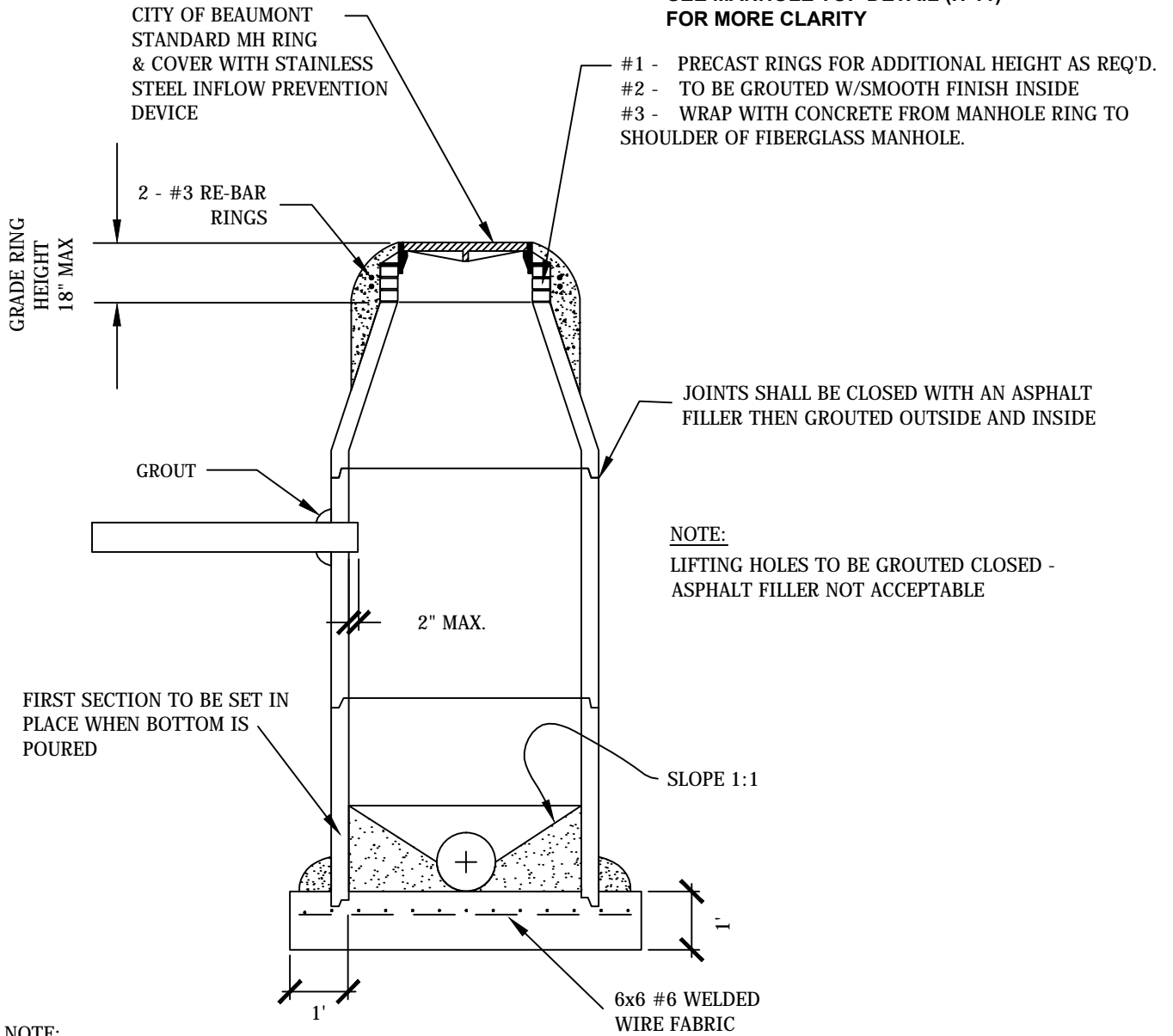
<b><u>Description</u></b>	<b><u>Page #</u></b>
• Tie Into Existing Precast Manhole Detail.....	H-1
• Typical Fiberglass Manhole .....	H-2
• Typical Fiberglass Manhole .....	H-3
• Fiberglass Manhole Bottom Detail .....	H-4
• Typical Liner Connection to New Manhole .....	H-5
• Section "A-A" of Typical Liner Connection to New Manhole .....	H-6
• Manhole over existing Large Line (36" and up) .....	H-7
• Shallow Manhole Detail .....	H-8
• Typical Manhole for Pipebursting .....	H-9
• Manhole Increaser Ring Detail For Standard Manhole Frame and Cover.....	H-10
• Manhole Top Detail .....	H-11
• Standard Manhole Frame and Cover .....	H-12
• Typical Invert Shaping .....	H-13
• Plan View - Typical Short Side Tap detail for Sewer Mains Less Than 6' Deep .....	H-14
• Profile View - Typical Short Side Tap detail with Service Connection for Sanitary Sewer Mains Less Than 6' .....	H-15
• Plan View - Typical Long Side Tap Detail for Sanitary Sewer Mains Less Than 6' Deep .....	H-16
• Typical Service Tap Connection Only on HDPE Pipe .....	H-17
• Typical Service Tap Connection for PVC Pipe .....	H-18
• Standard Typical Service Tap Connection for Concrete or Clay Pipe.....	H-19
• Typical Service Tap Connection for Concrete or Clay Pipe with Saddle (To be used only when approved by Water Utilities Engineer).....	H-20
• Plan View - Typical Short Side Tap Detail for Sanitary Sewer Mains Deeper Than 6' .....	H-21
• Profile View - Typical Short Side Tap Detail for Sanitary Sewer Mains Deeper Than 6' .....	H-22
• Typical Long and Short Side Sanitary Sewer Service Connection and Street Crossing Details .....	H-23
• Sanitary Sewer Service Line Detail for Sanitary Sewer Mains Over 6' Deep .....	H-24
• Sanitary Sewer Clean Out Detail .....	H-25



<u>Description</u>	<u>Page #</u>
• Installation of a Clean Out on an Existing Sanitary Sewer Service Connection .....	H-26
• Typical Sanitary Sewer Service Line Replacement on Sliplined Sanitary Sewer Main .....	H-27
• Typical Mandrel Detail .....	H-28
• Typical Long and Short Side Water and Sanitary Sewer Service Connection .....	H-29
• Typical Water and Sanitary Sewer Main Crossing .....	H-30
• Typical Fire Service Line Connection .....	H-31
• Typical Fire Hydrant Installation .....	H-32
• Typical Water Meter Installation New Subdivision .....	H-33
• Typical Meter Installation of 1 ½" to 2" Meter using a Cast Iron Meter Box .....	H-34
• Typical Meter Installation of 1 ½" to 2" Meter using a Concrete Meter Box .....	H-35
• Typical Water Service Connection .....	H-36
• Typical Long and Short Side Water Service Connection and Street Crossing Details .....	H-37
• Permanent Flush Out Detail .....	H-38
• Temporary Flush Out Detail .....	H-39
• Typical Meter Bank Installation for 5/8" and 1" Meters .....	H-40
• Typical Meter Bank Installation for 1 ½" and 2" Meters .....	H-41
• Typical Fittings and Concrete Thrust Block Installation .....	H-42
• Typical Fittings and Concrete Thrust Block Installation .....	H-43
• Typical Casing Detail .....	H-44
• Main Line Repair Detail .....	H-45
• Typical Utility Crossing .....	H-46
• Typical Road and Trench Backfilling .....	H-47

**NOTE:**

**\*\* SEE MANHOLE TOP DETAIL (H-11)  
FOR MORE CLARITY**



**NOTE:**

LIFTING HOLES TO BE GROUTED CLOSED - ASPHALT FILLER NOT ACCEPTABLE

**NOTE:**

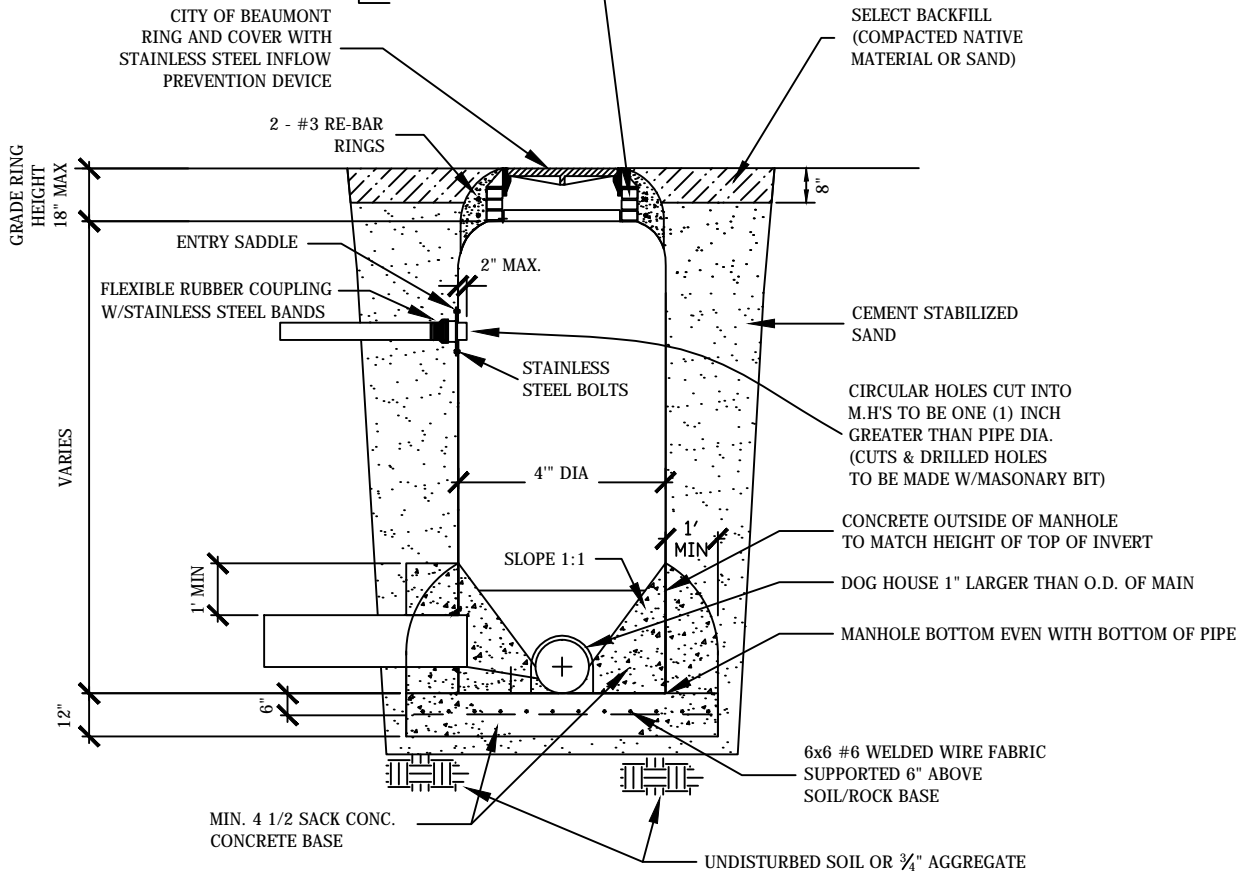
1. HANSON PIPE PRECAST BASE OR EQUAL (OPTIONAL)
2. IF A MANHOLE IS PLACED WITHIN A DITCH, THEN IT MUST BE PRE-CAST AND THE TOP OF THE MANHOLE MUST BE FOUR (4) INCHES ABOVE FINISHED DITCH GRADE.

# TIE INTO EXISTING PRECAST MANHOLE DETAIL

**NOTE:**

\*\* SEE MANHOLE TOP DETAIL (H-11) FOR MORE CLARITY

- #1 - PRECAST RINGS FOR ADDITIONAL HEIGHT AS REQ'D.
- #2 - TO BE GROUTED W/SMOOTH FINISH INSIDE
- #3 - WRAP WITH CONCRETE FROM MANHOLE RING TO SHOULDER OF FIBERGLASS MANHOLE.



**NOTE:**

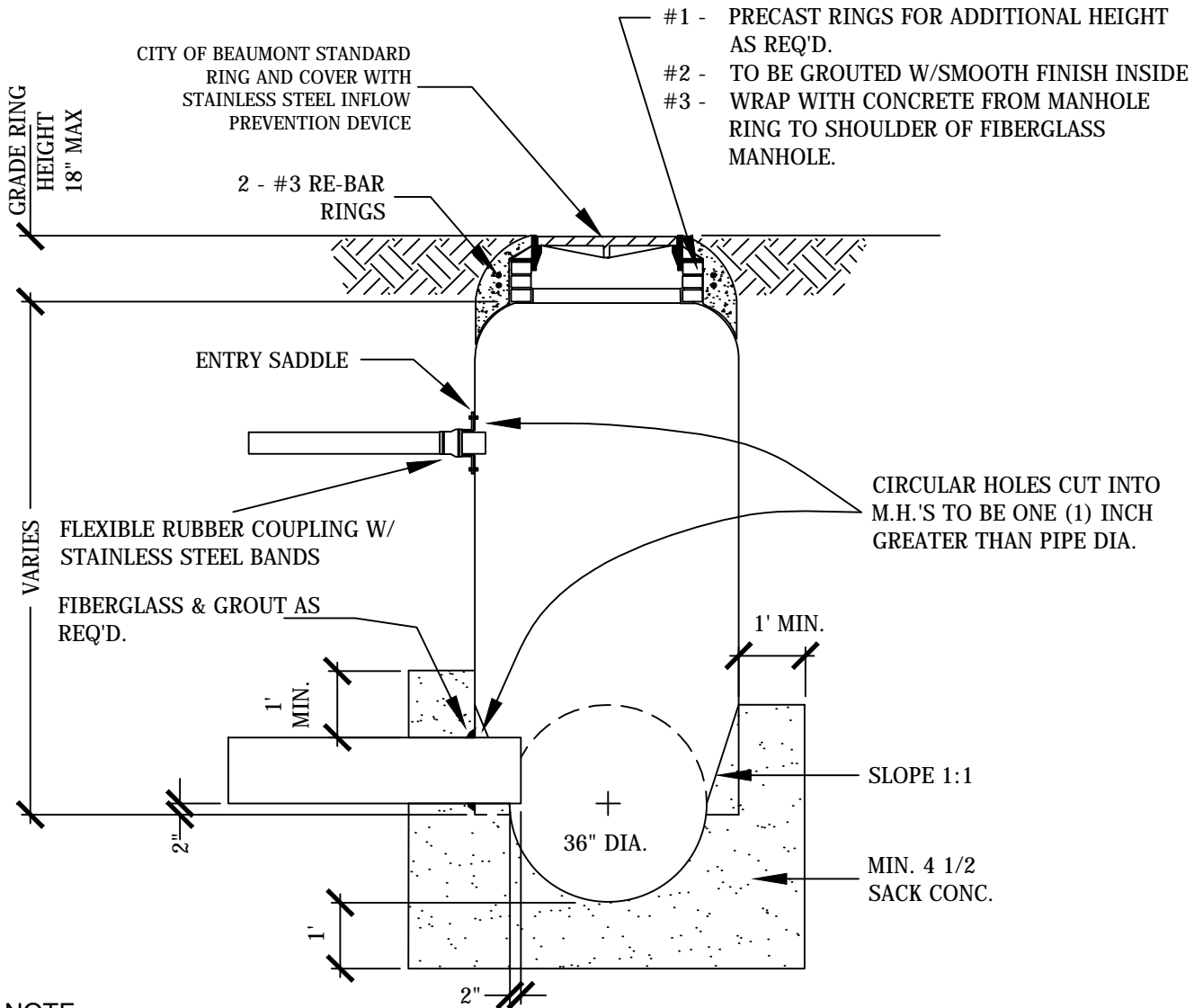
1. INSTALLATION SHALL BE COMPLY WITH MANUFACTURES RECOMMENDED INSTALLATION INSTRUCTIONS.
2. IF FIBERGLASS MANHOLE IS INSTALLED WITHIN 5' OF THE ROADWAY THEN STABILIZED SAND NEEDS TO BE USED.
3. IF FIBERGLASS MANHOLE IS INSTALLED BEYOND 5' THEN SELECT BACKFILL CAN BE USED.
4. IF MANHOLE IS PLACED IN THE DITCH, SEE H-1 (PRECAST MANHOLE DETAIL)

## TYPICAL FIBERGLASS MANHOLE

CITY OF BEAUMONT  
WATER UTILITIES DEPARTMENT  
N.T.S.

**NOTE:**

**\*\* SEE MANHOLE TOP DETAIL (H-11)  
FOR MORE CLARITY**

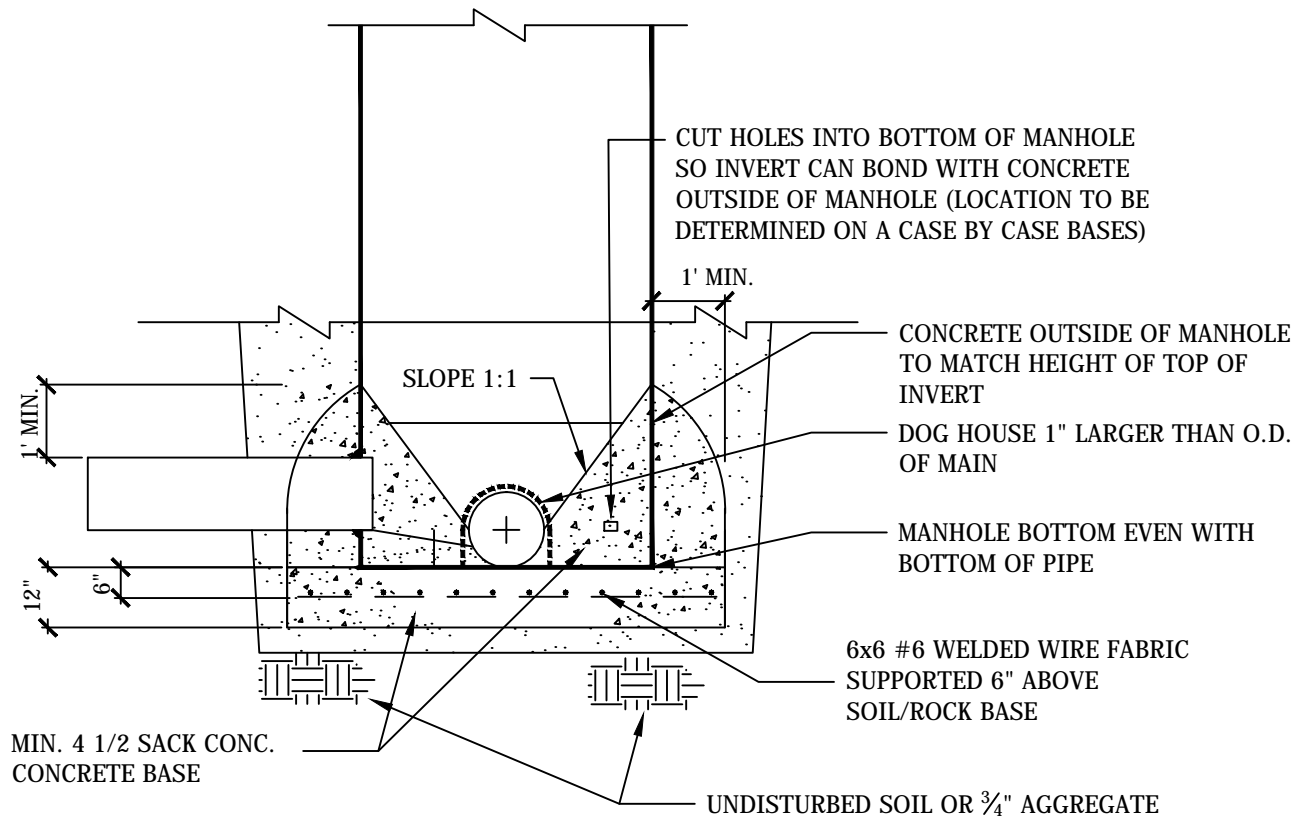


**NOTE:**

IF MANHOLE IS PLACED IN THE DITCH,  
SEE H-1 (PRECAST MANHOLE DETAIL)

## TYPICAL FIBERGLASS MANHOLE

CITY OF BEAUMONT  
WATER UTILITIES DEPARTMENT  
N.T.S.



NOTE:

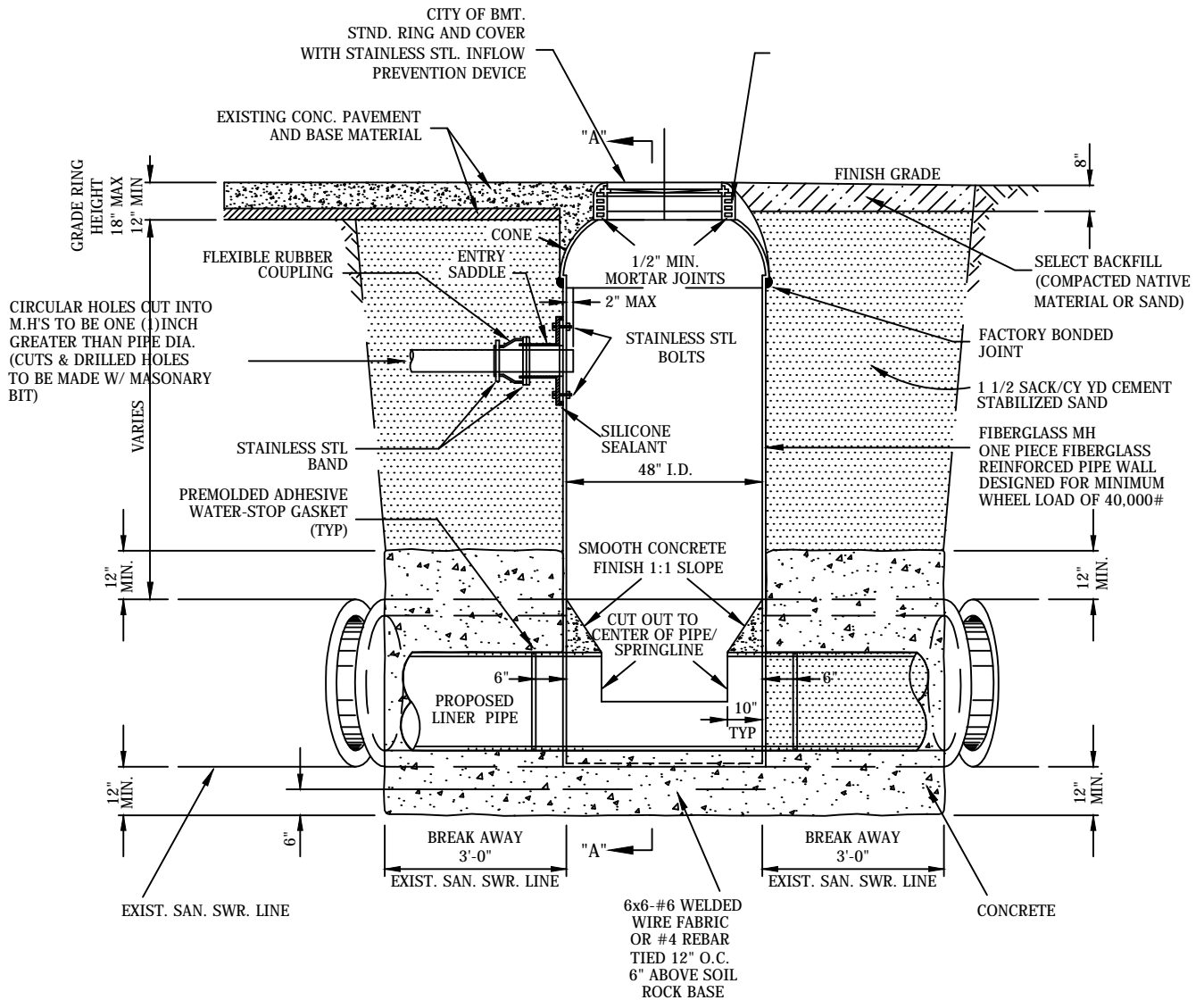
INSTALLATION SHALL BE COMPLY WITH MANUFACTURES  
RECOMMENDED INSTALLATION INSTRUCTIONS

## FIBERGLASS MANHOLE BOTTOM DETAIL

**NOTE:**

\*\* SEE MANHOLE TOP DETAIL (H-11) FOR MORE CLARITY

- #1 - PRECAST RINGS FOR ADDITIONAL HEIGHT AS REQ'D.
- #2 - TO BE GROUTED W/SMOOTH FINISH INSIDE
- #3 - WRAP WITH CONCRETE FROM MANHOLE RING TO SHOULDER OF FIBERGLASS MANHOLE.

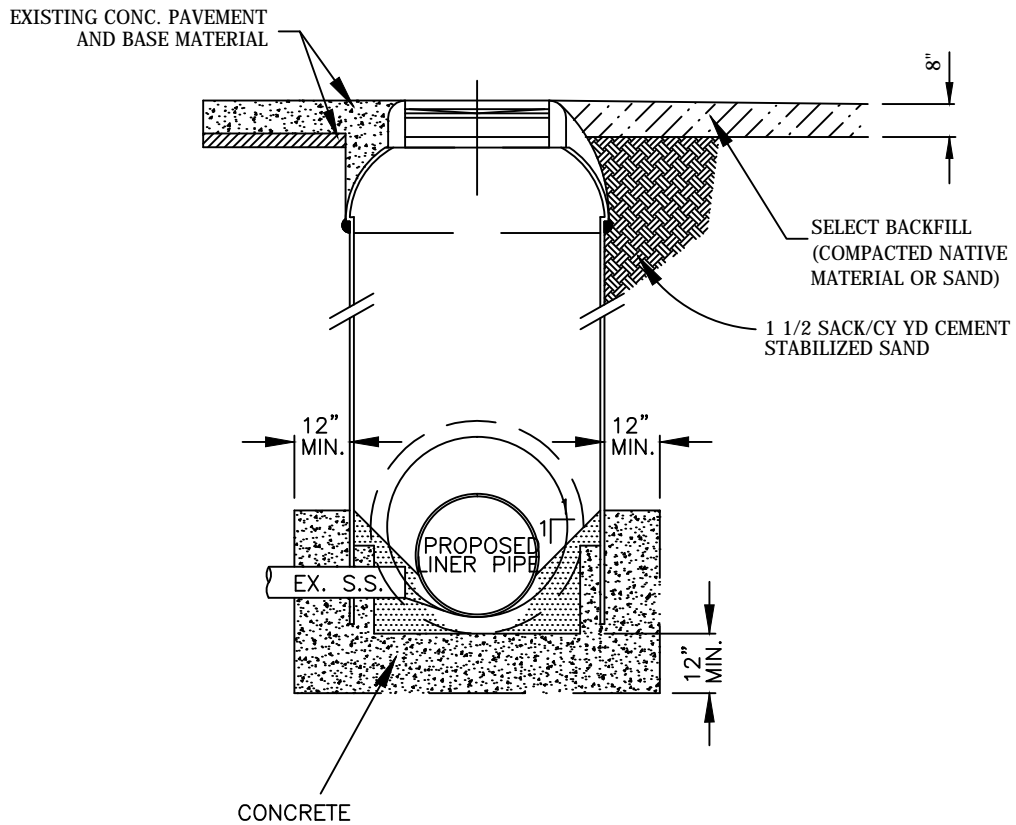


## TYPICAL LINER CONNECTION TO NEW MANHOLE

CITY OF BEAUMONT  
WATER UTILITIES DEPARTMENT  
N.T.S.

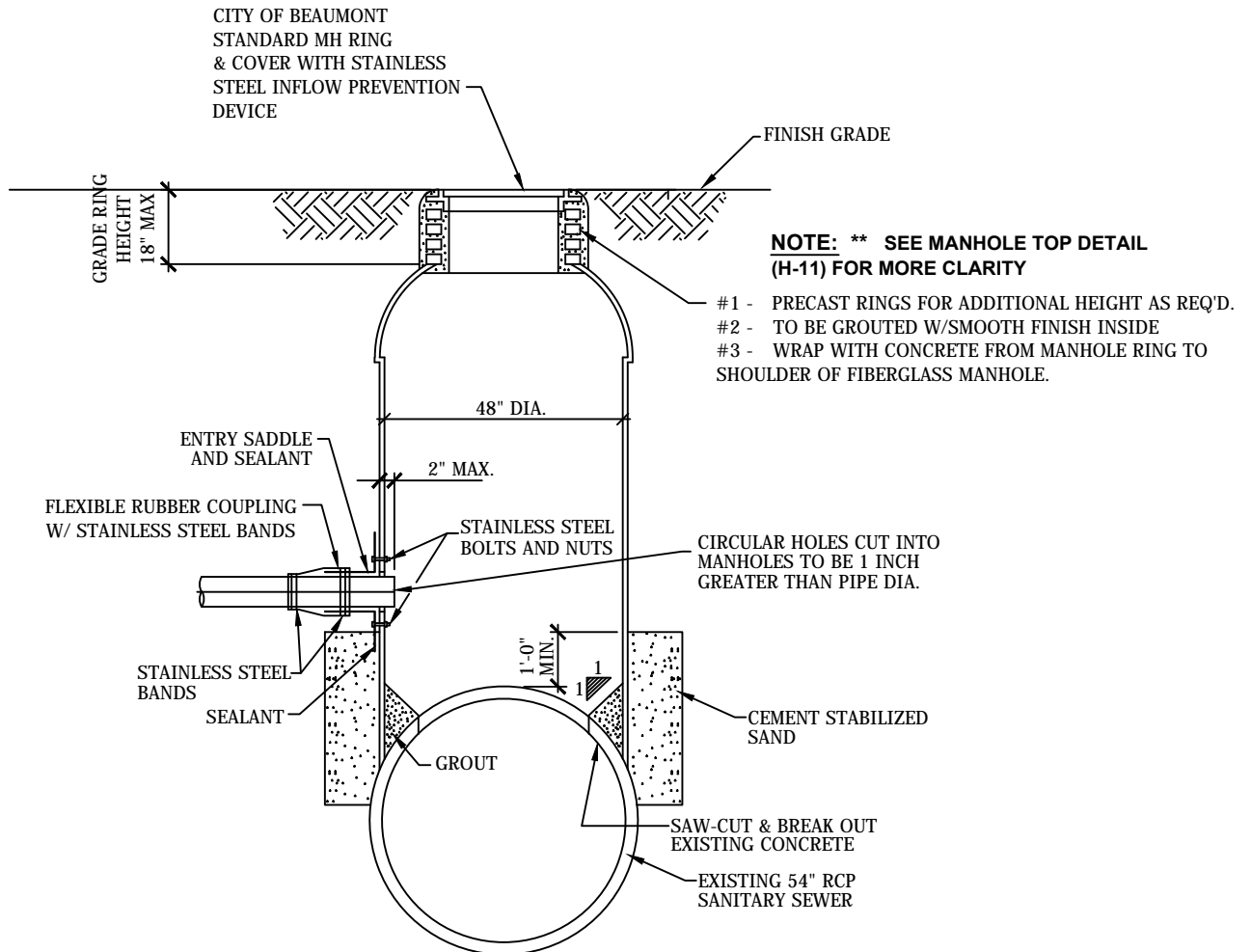
**NOTE:**

INVERT SHOULD BE SHAPED TO FORM A SMOOTH TRANSITION FROM MANHOLE WALLS TO INVERT OF EFFLUENT PIPE. ALL CORNERS SHALL BE FILLED WITH GROUT AND SHAPED SO AS TO CHANNEL FLOW TO INVERT OF EFFLUENT PIPE WITH NO OBSTRUCTIONS.



**SECTION "A-A" OF  
TYPICAL LINER CONNECTION  
TO NEW MANHOLE**





**NOTE:**

IF MANHOLE IS PLACED IN THE DITCH, SEE  
H-1 (PRECAST MANHOLE DETAIL)

## MANHOLE OVER EXISTING LARGE LINE (36" AND UP)

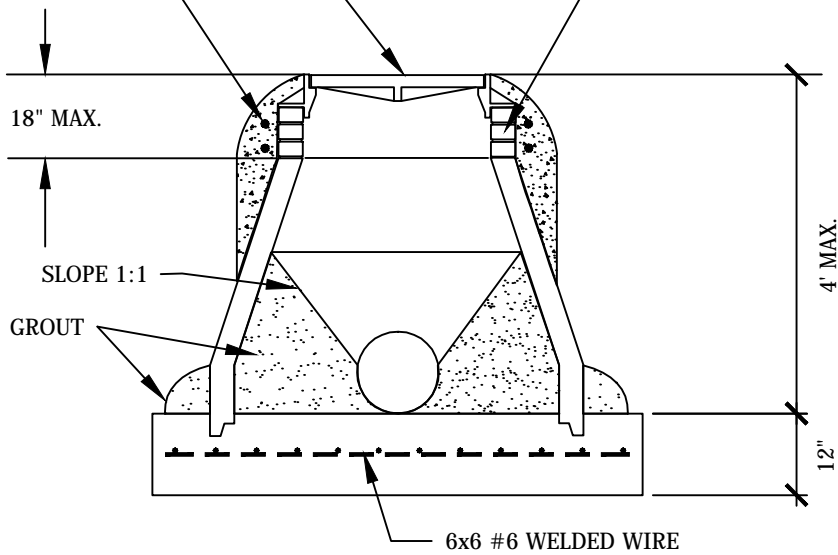
**NOTE:**

**\*\* SEE MANHOLE TOP DETAIL (H-11) FOR MORE CLARITY**

- #1 - PRECAST RINGS FOR ADDITIONAL HEIGHT AS REQ'D.
- #2 - TO BE GROUTED W/SMOOTH FINISH INSIDE
- #3 - WRAP WITH CONCRETE FROM MANHOLE RING TO SHOULDER OF FIBERGLASS MANHOLE.

CITY OF BEAUMONT STANDARD RING AND COVER WITH STAINLESS STEEL INFLOW PREVENTION DEVICE

2 - #3 RE-BAR RINGS

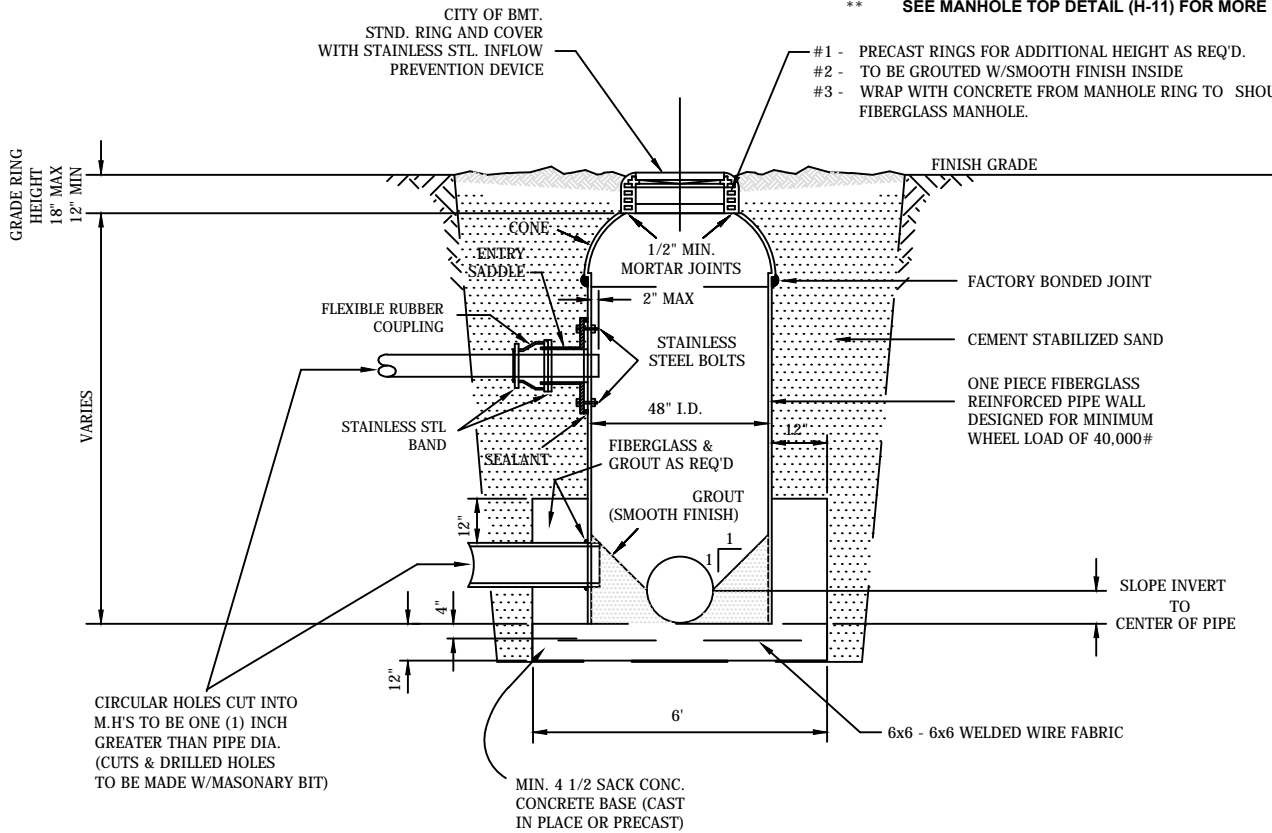


## SHALLOW MANHOLE DETAIL

CITY OF BEAUMONT  
WATER UTILITIES DEPARTMENT  
N.T.S.

**NOTE:**

\*\* SEE MANHOLE TOP DETAIL (H-11) FOR MORE CLARITY



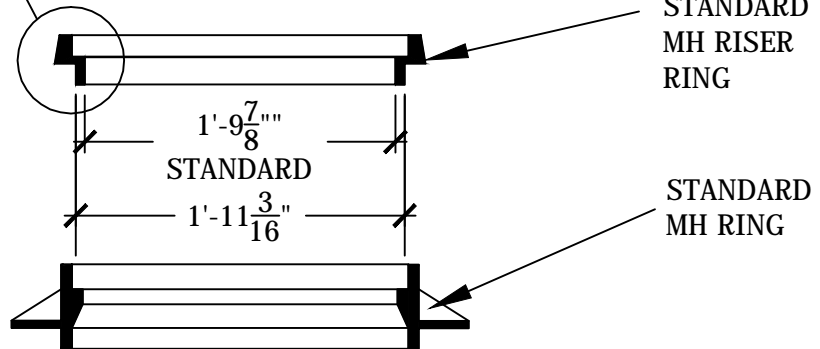
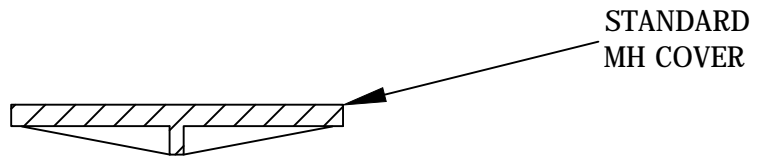
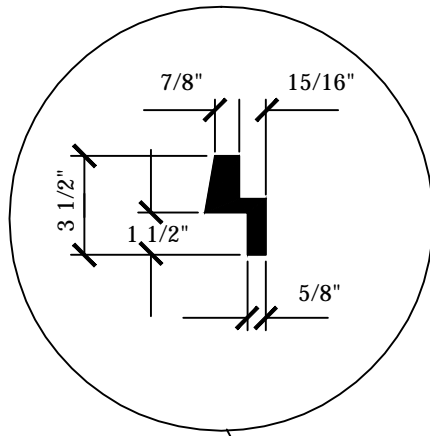
**NOTES:**

D3753-79 (STANDARD SPECIFICATION FOR GLASS FIBER-REINFORCED POLYESTER MANHOLES). ALL MANHOLES SUPPLIED WITH CONES SHALL BE CERTIFIED TO COMPLY WITH ANSI/ASTM. INSTALLATION SHALL COMPLY WITH MANUFACTURER'S RECOMMENDED INSTALLATION INSTRUCTIONS.

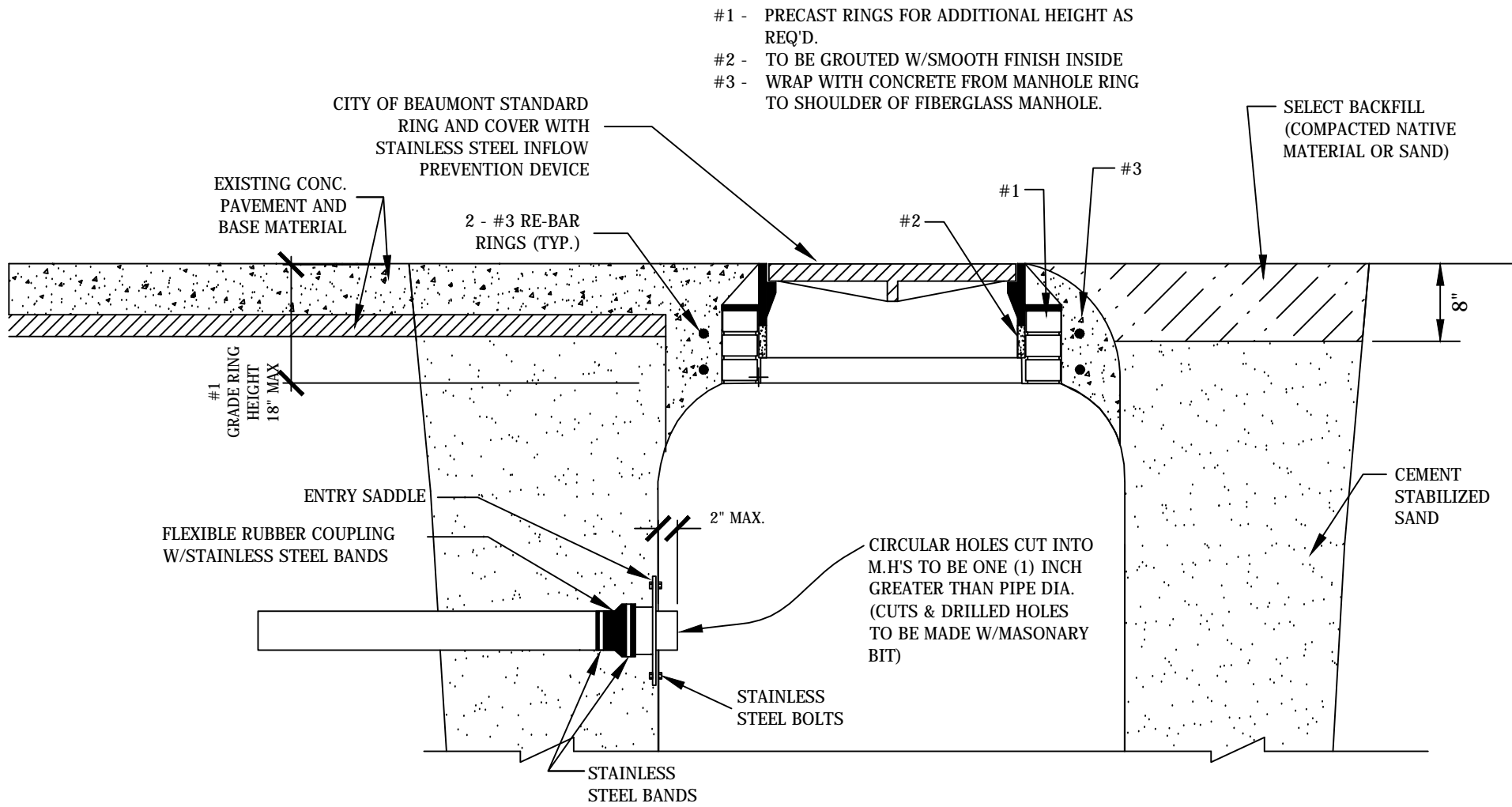
FIBERGLASS MANHOLE STIFFNESS - THICKNESS				
DEPTH	3'- 6'	7'- 12'	13'- 20'	21'- 25'
NOMINAL WALL THICKNESS	.25	.30	.48	.48
MIN. STIFFNESS F <sub>AY</sub> , PSI (kPa)	.72 (4.96)	1.26 (8.69)	2.01 (13.86)	3.02 (20.82)

# TYPICAL MANHOLE FOR PIPEBURSTING

CITY OF BEAUMONT  
WATER UTILITIES DEPARTMENT  
N.T.S.



**MANHOLE INCREASER  
 RING DETAIL  
 FOR STANDARD  
 MANHOLE FRAME AND COVER**



- #1 - PRECAST RINGS FOR ADDITIONAL HEIGHT AS REQ'D.
- #2 - TO BE GROUTED W/SMOOTH FINISH INSIDE
- #3 - WRAP WITH CONCRETE FROM MANHOLE RING TO SHOULDER OF FIBERGLASS MANHOLE.

#1  
GRADE RING  
HEIGHT  
18" MAX

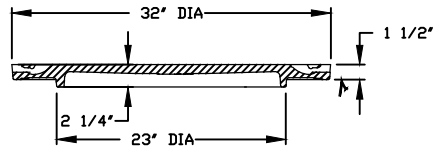
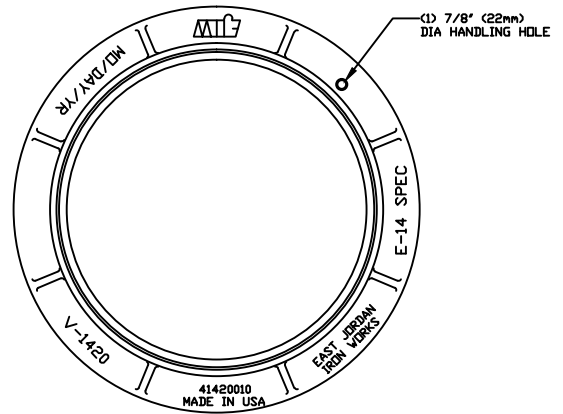
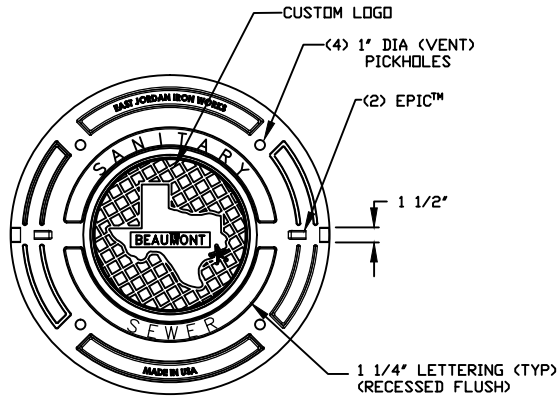
8"

2" MAX.

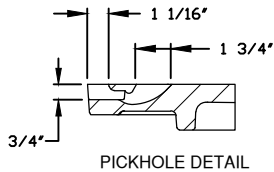
## MANHOLE TOP DETAIL

CITY OF BEAUMONT  
WATER UTILITIES DEPARTMENT  
N.T.S.

H-111

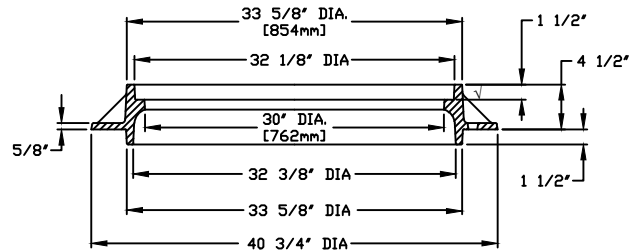


COVER SECTION



PICKHOLE DETAIL

FRAME TOP VIEW



FRAME SECTION

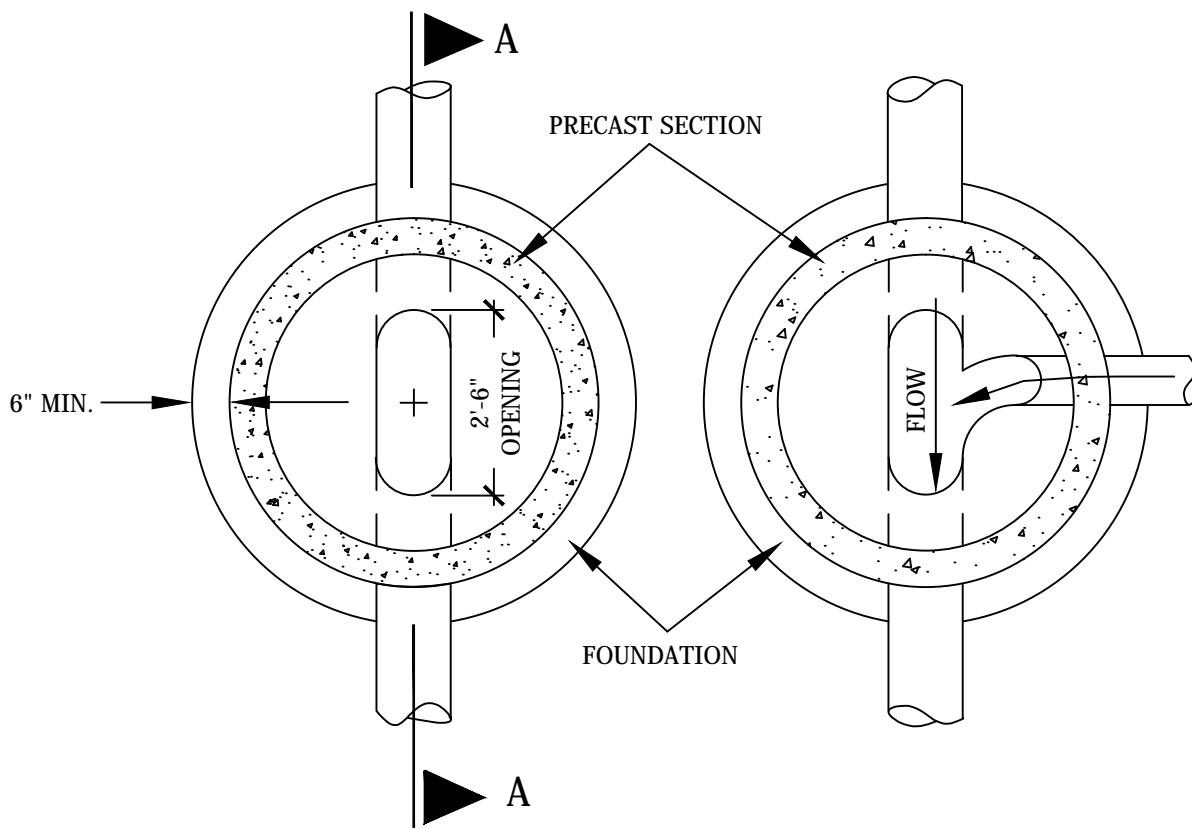
√ DENOTES MACHINED SURFACE

**SPECIFICATIONS:**

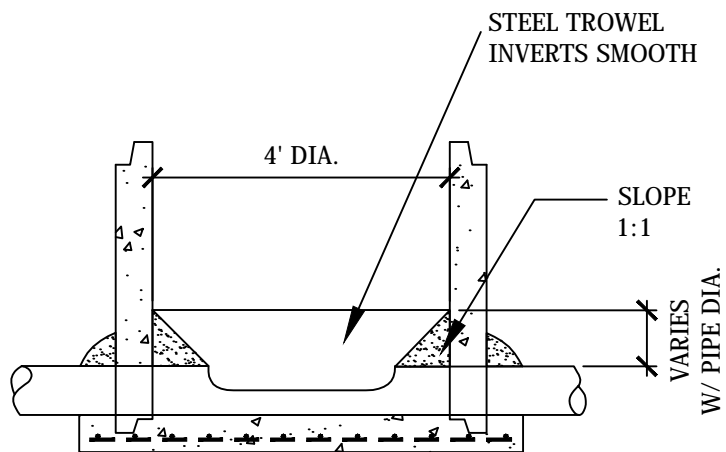
1. MATERIAL: RING: CAST IRON A. S. T. M. A-48, CLASS NO. 35, COVER: DUCTILE IRON, ASTM A536, AASHTO M306
2. ALL CASTINGS SHALL BE FIRST QUALITY, SMOOTH CASTINGS, FREE FROM FLAWS, BLOW HOLES, SAND HOLES OR OTHER IMPERFECTIONS.
3. THE BEARING SURFACES OF ALL FRAMES AND COVERS BOTH SHALL BE MACHINED FINISHED FOR FULL PERIPHERY EVEN BEARINGS.
4. ALL CASTINGS MUST BE SAND BLASTED CLEAN OF SCALE OR SAND SO AS TO PRESENT A SMOOTH, CLEAN AND UNIFORM SURFACE.
5. THE WEIGHT OF THE MANHOLE RING SHOULD NOT EXCEED 235 LBS.
6. THE WEIGHT OF THE MANHOLE COVER SHOULD NOT EXCEED 175 LBS.

# STANDARD MANHOLE FRAME AND COVER

CITY OF BEAUMONT  
WATER UTILITIES DEPARTMENT  
N.T.S.

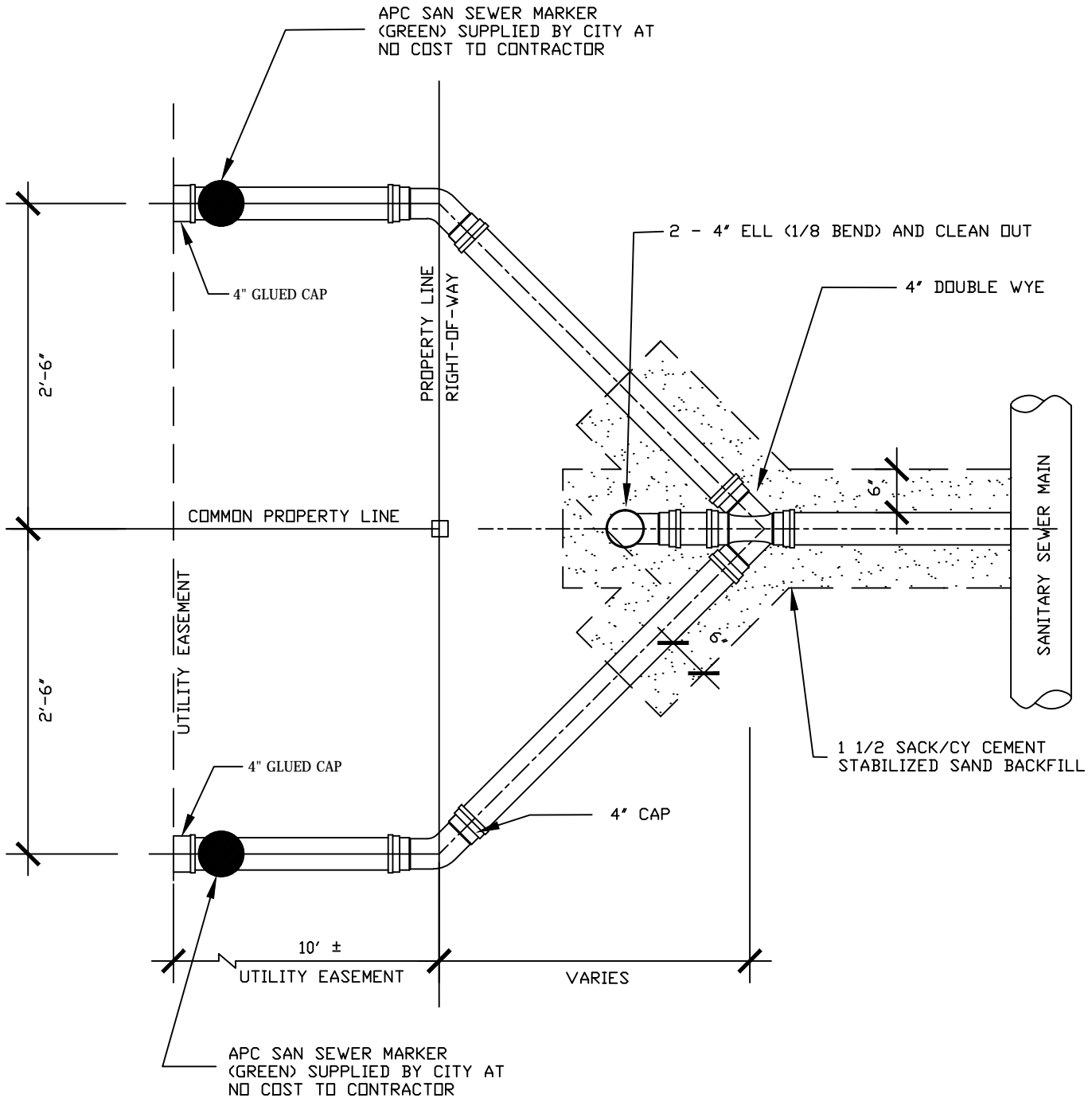


PLAN VIEW



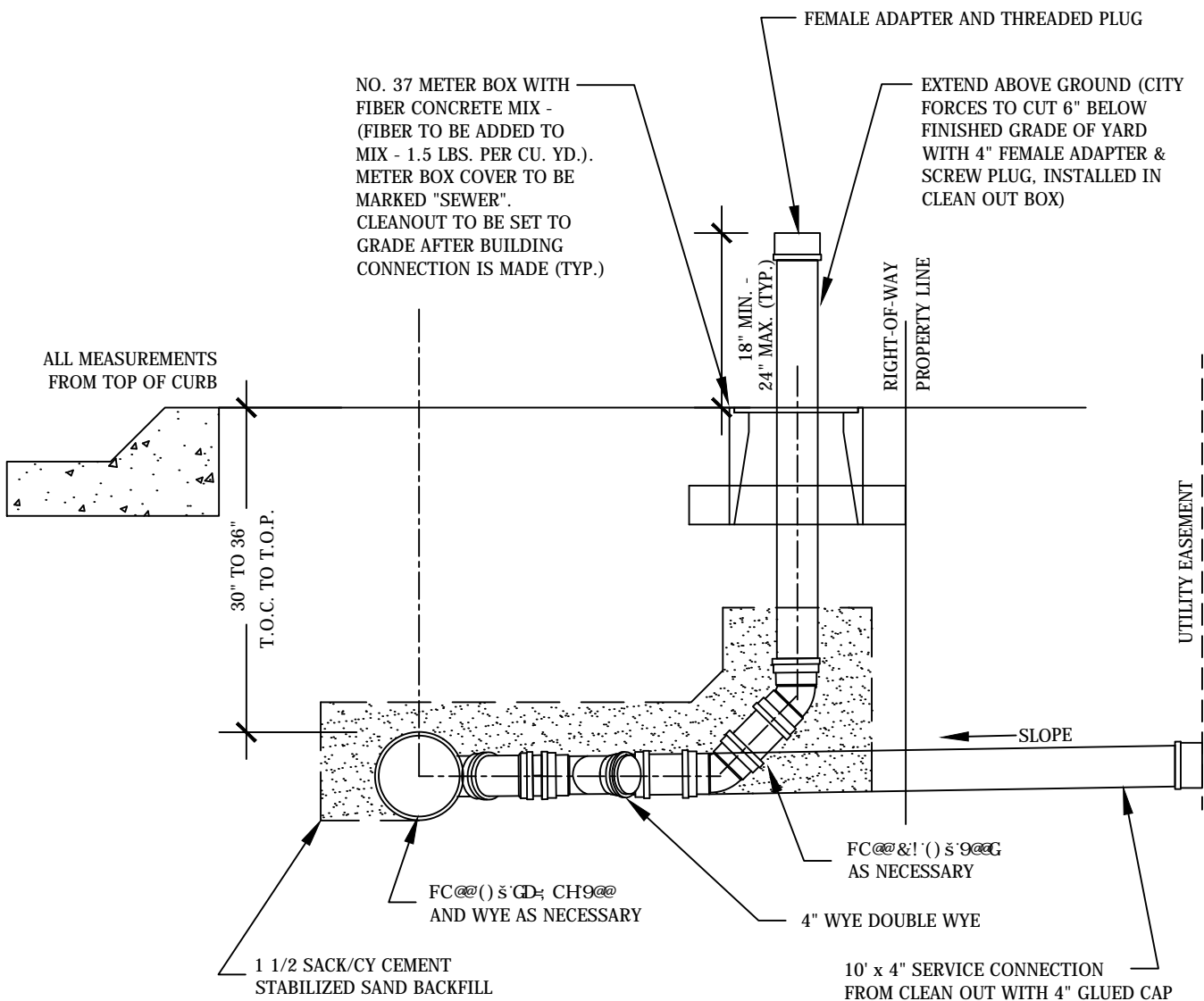
SECTION A-A

## TYPICAL INVERT SHAPING

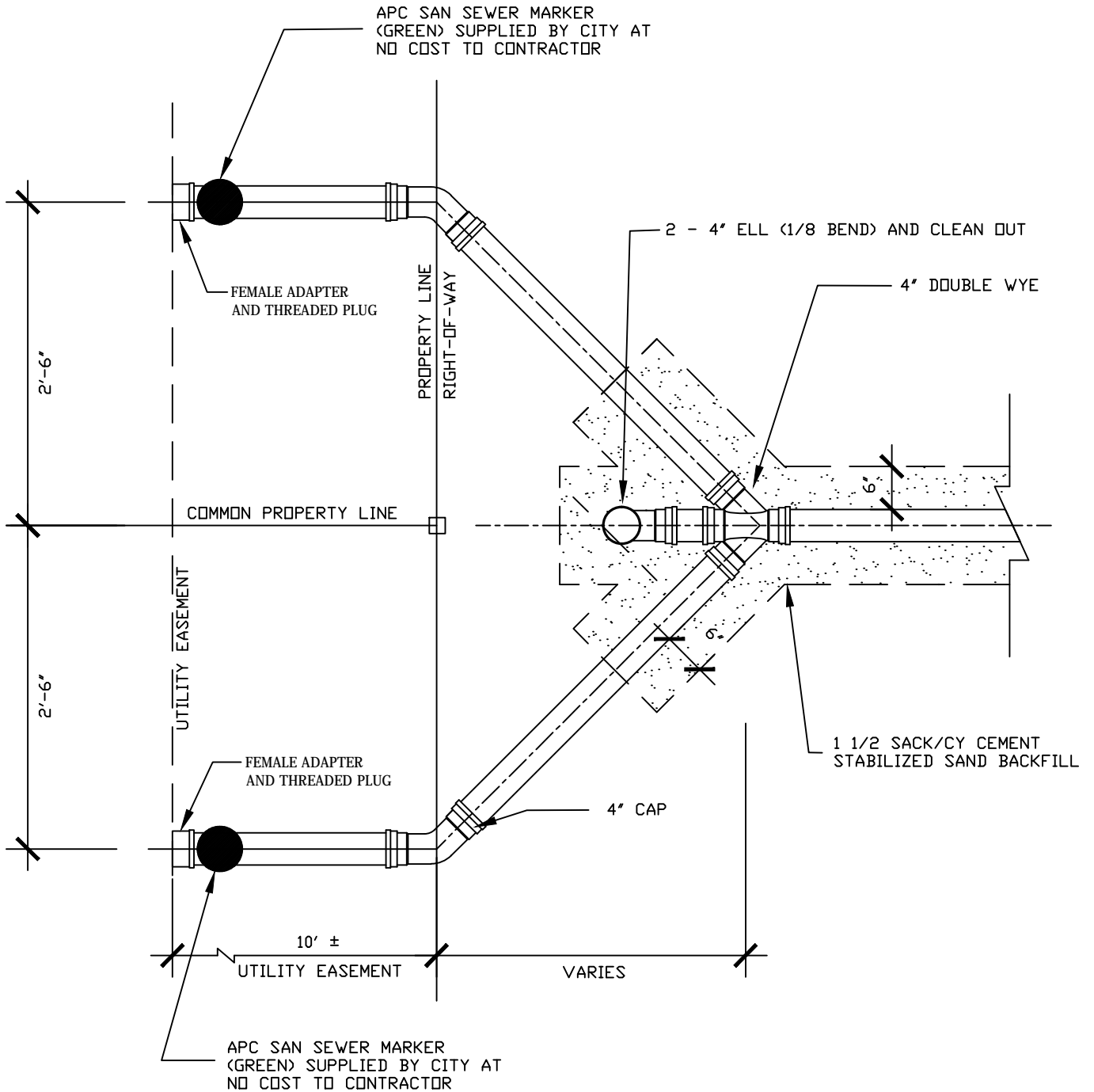


**PLAN VIEW**  
**TYPICAL SHORT SIDE TAP DETAIL**  
**FOR SEWER MAINS LESS THAN 6' DEEP**



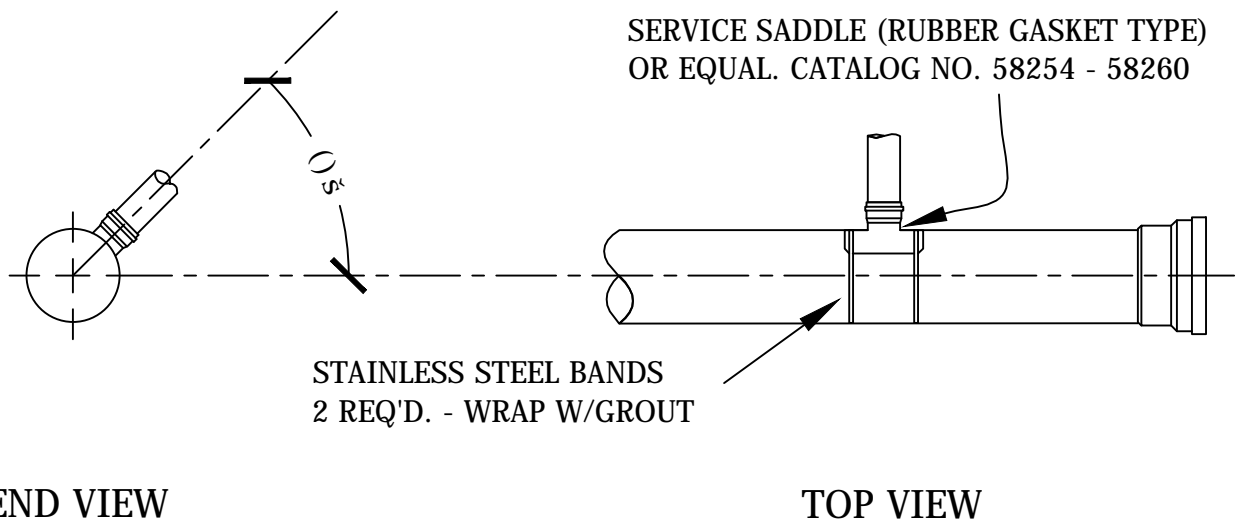


**PROFILE VIEW  
TYPICAL SHORT SIDE TAP DETAIL  
WITH SERVICE CONNECTION  
FOR SEWER MAINS LESS THAN 6' DEEP**



**PLAN VIEW**  
**TYPICAL LONG SIDE TAP DETAIL**  
**FOR SEWER MAINS LESS THAN 6' DEEP**

FOR SADDLE LIP.

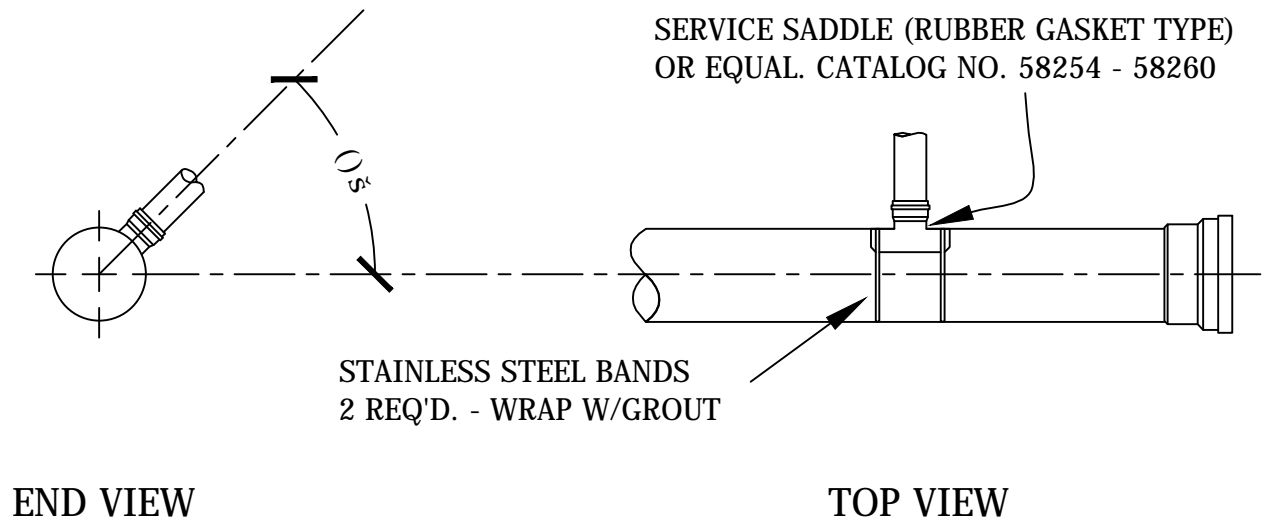


**TYPICAL SERVICE TAP  
CONNECTION ONLY ON HDPE PIPE**

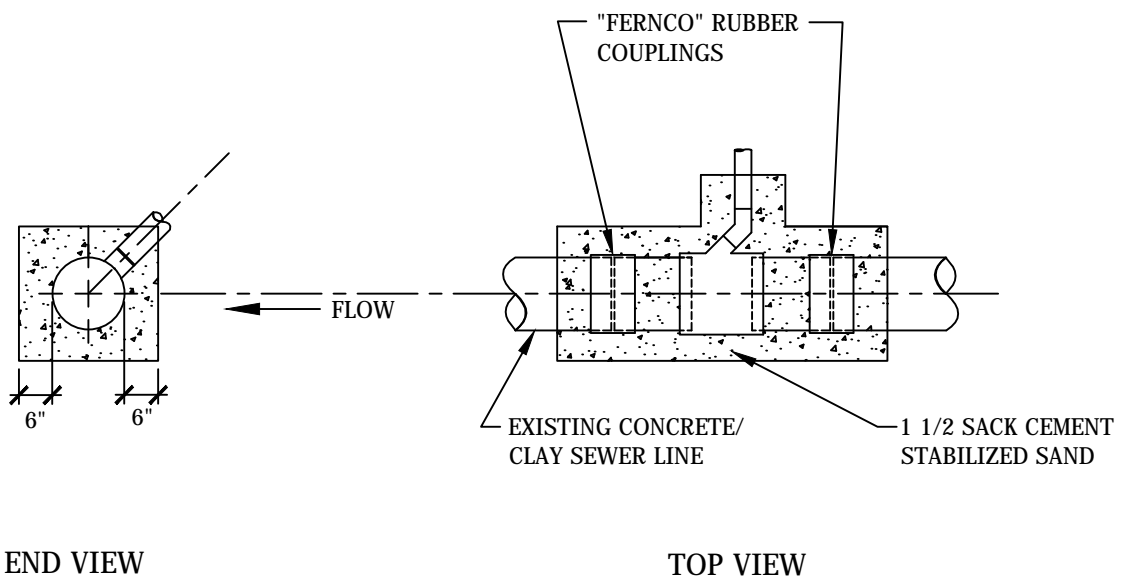
CITY OF BEAUMONT  
WATER UTILITIES DEPARTMENT  
N.T.S.

**NOTE:**

- \* TO BE DRILLED WITH HOLE SAW AND GUIDE BIT. USE CORRECT DIAMETER FOR SADDLE LIP.

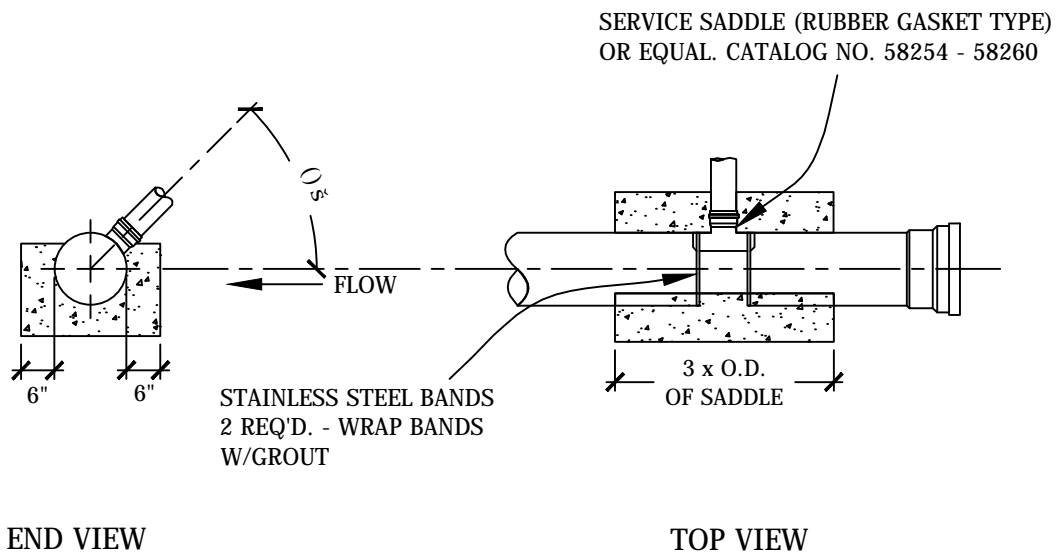


**TYPICAL SERVICE TAP  
CONNECTION FOR PVC PIPE**

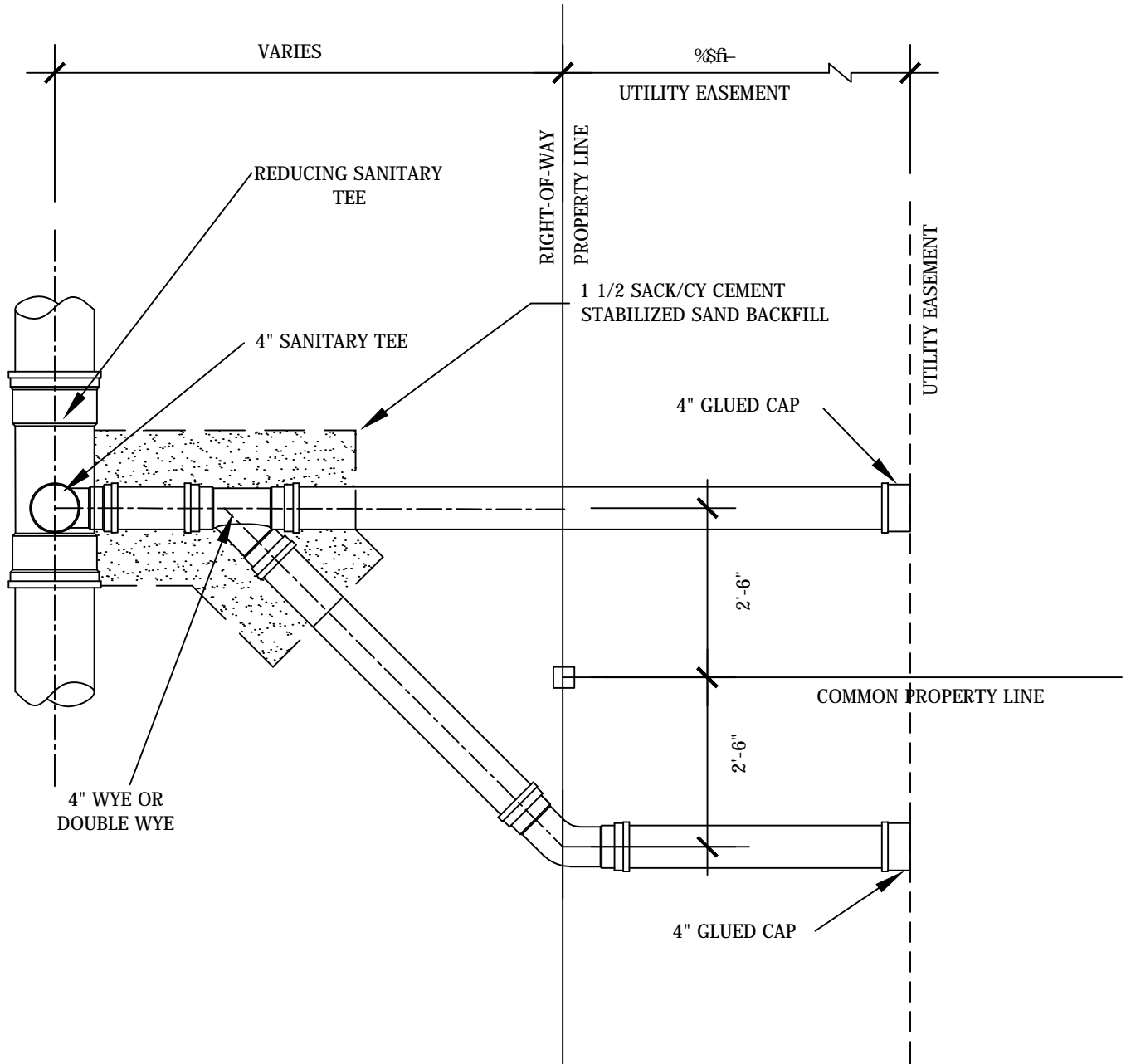


**STANDARD TYPICAL SERVICE  
TAP CONNECTION FOR  
CONCRETE/CLAY PIPE**

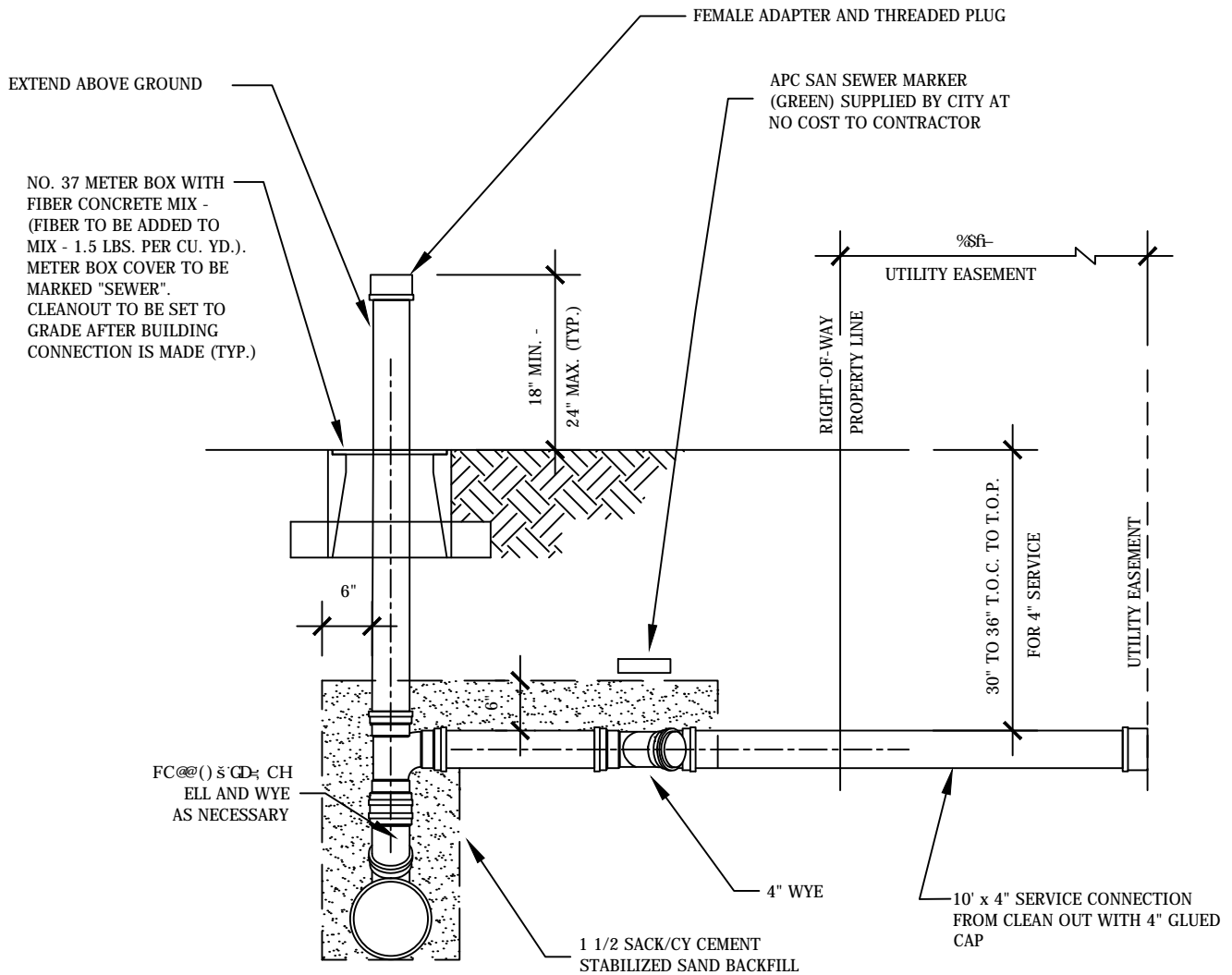
CITY OF BEAUMONT  
WATER UTILITIES DEPARTMENT  
N.T.S.



**TYPICAL SERVICE TAP CONNECTION  
FOR CONCRETE/CLAY PIPE WITH SADDLE  
(TO BE USED ONLY WHEN APPROVED BY  
WATER UTILITIES ENGINEER)**

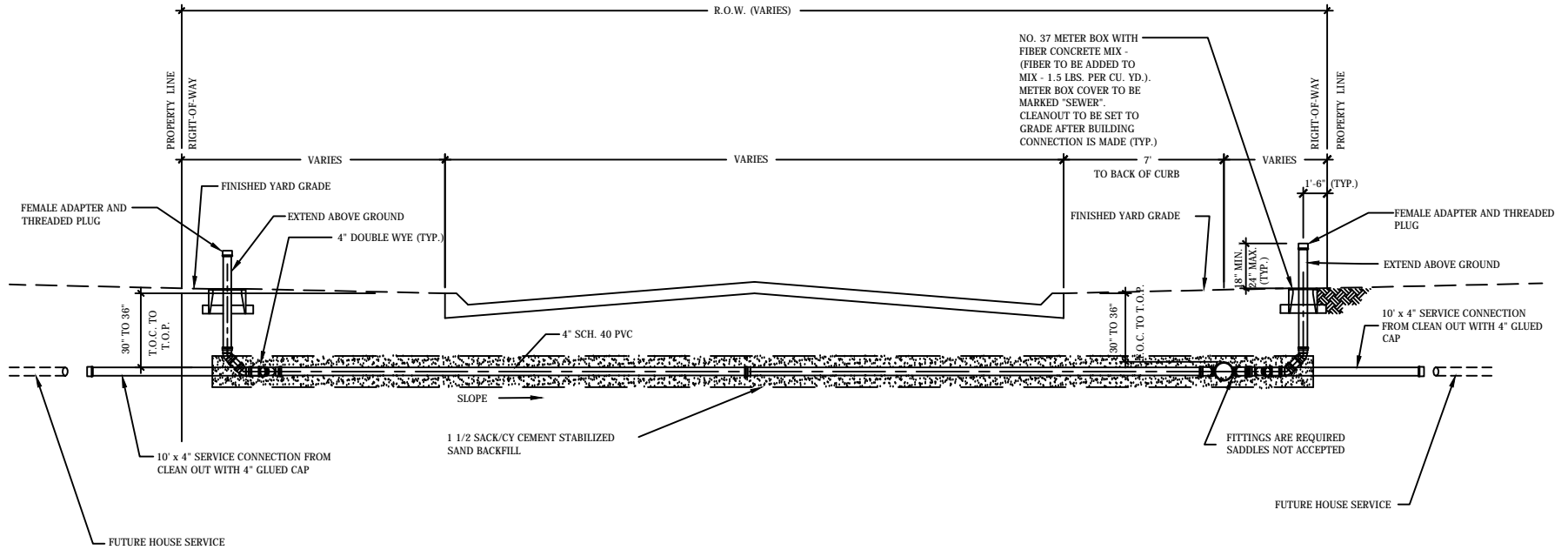


**PLAN VIEW**  
**TYPICAL SHORT SIDE TAP DETAIL**  
**FOR SEWER MAINS DEEPER THAN 6'**

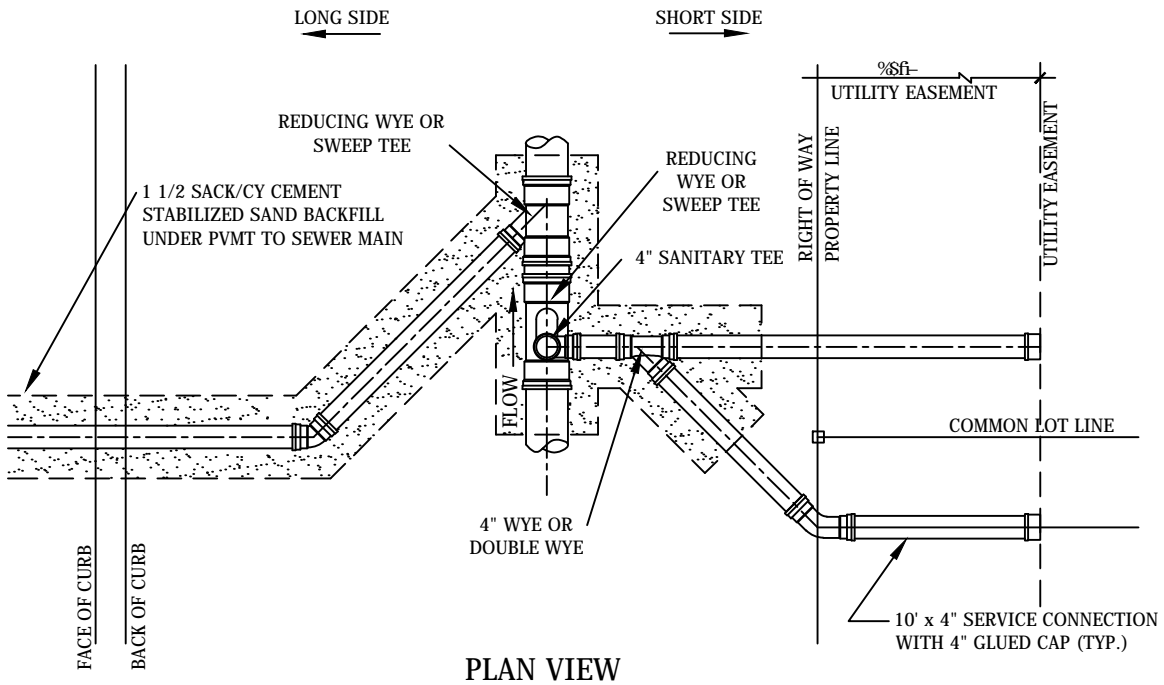


**PROFILE VIEW  
TYPICAL SHORT SIDE TAP DETAIL  
FOR SEWER MAINS DEEPER THAN 6'**



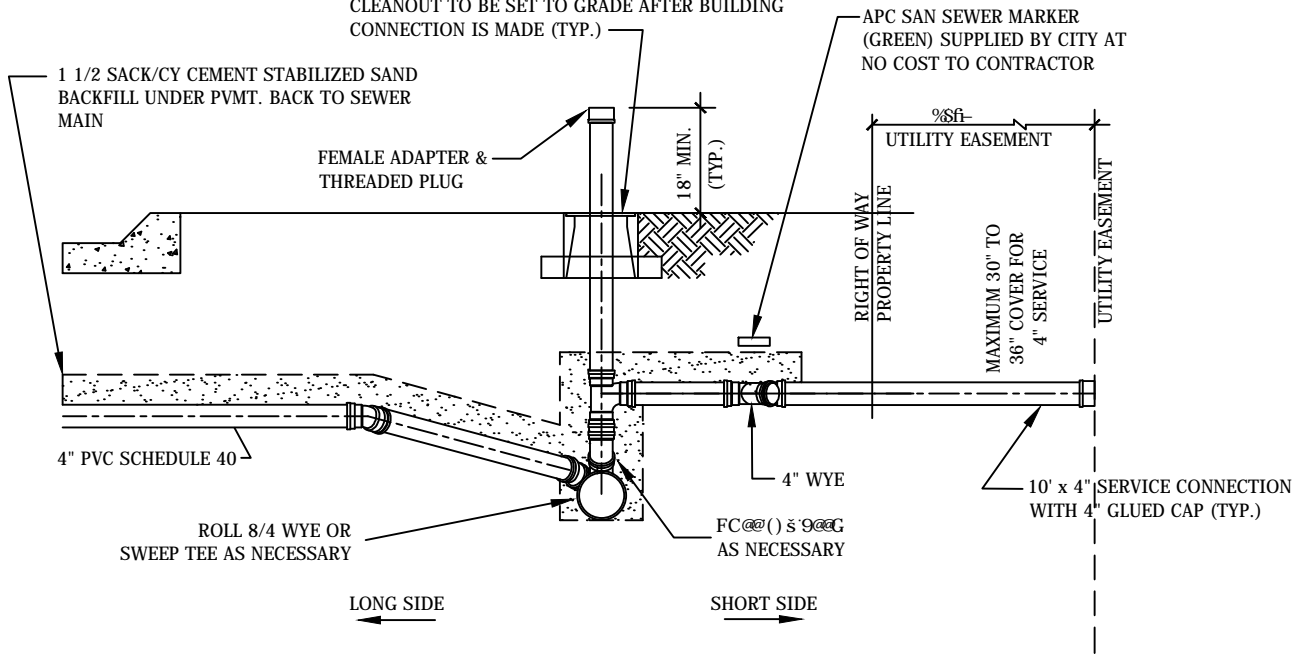


## TYPICAL LONG AND SHORT SIDE SANITARY SEWER SERVICE CONNECTION AND STREET CROSSING DETAILS



PLAN VIEW

NO. 37 METER BOX WITH FIBER CONCRETE MIX -  
 (FIBER TO BE ADDED TO MIX - 1.5 LBS. PER CU. YD.).  
 METER BOX COVER TO BE MARKED "SEWER".  
 CLEANOUT TO BE SET TO GRADE AFTER BUILDING  
 CONNECTION IS MADE (TYP.)

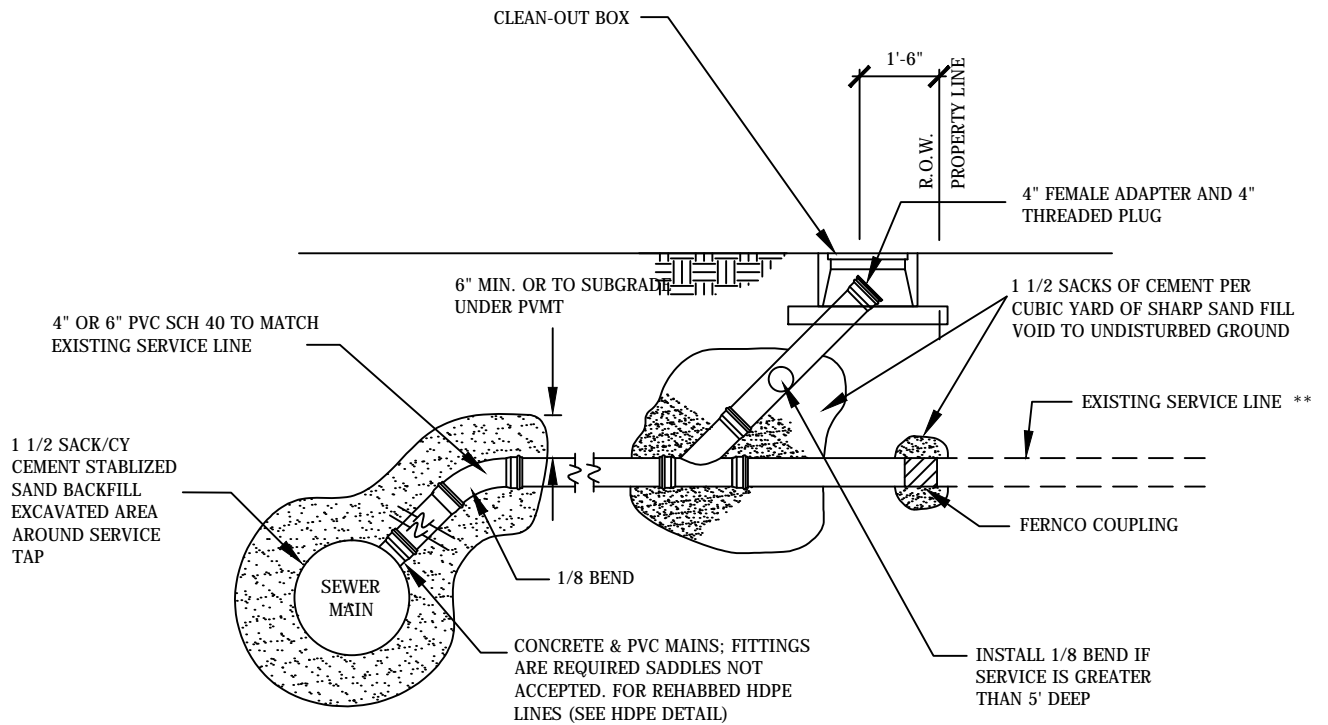


PROFILE VIEW

**NOTE:**

CLEAN OUT TO BE LOWERED TO 6" BELOW TOP OF CLEAN OUT BOX BY CITY FORCES AFTER BOTH SERVICE CONNECTIONS ARE IN SERVICE.

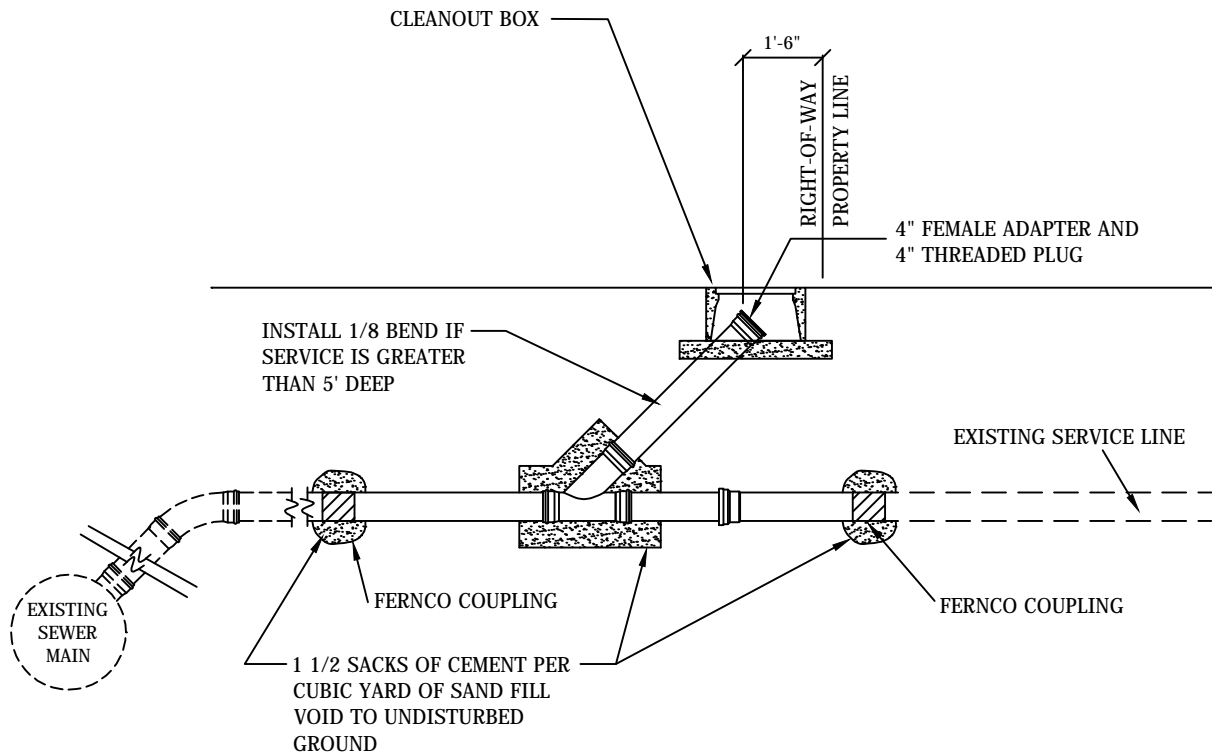
# SANITARY SEWER SERVICE LINE DETAIL FOR SEWER MAINS OVER 6' DEEP



**NOTE:**

- \* CLEAN OUT TO BE ACCESSABLE FROM PROPERTY IT SERVES
- \* NO. 37 METER BOX WITH FIBER CONCRETE MIX - (FIBER TO BE ADDED TO MIX - 1.5 LBS. PER CU. YD.). METER BOX COVER TO BE MARKED "SEWER". CLEAN-OUT TO BE SET TO GRADE AFTER BUILDING CONNECTION IS MADE. (TYP.)
- \*\* MIRROR THE EXISTING CONCRETE SEWER SERVICE LINE, IF PVC IS VISIBLE AND OUT OF EASEMENT, CONTACT YOUR SUPERVISOR FOR APPROVAL TO DIG BACK TO PVC FOR TIE-IN.

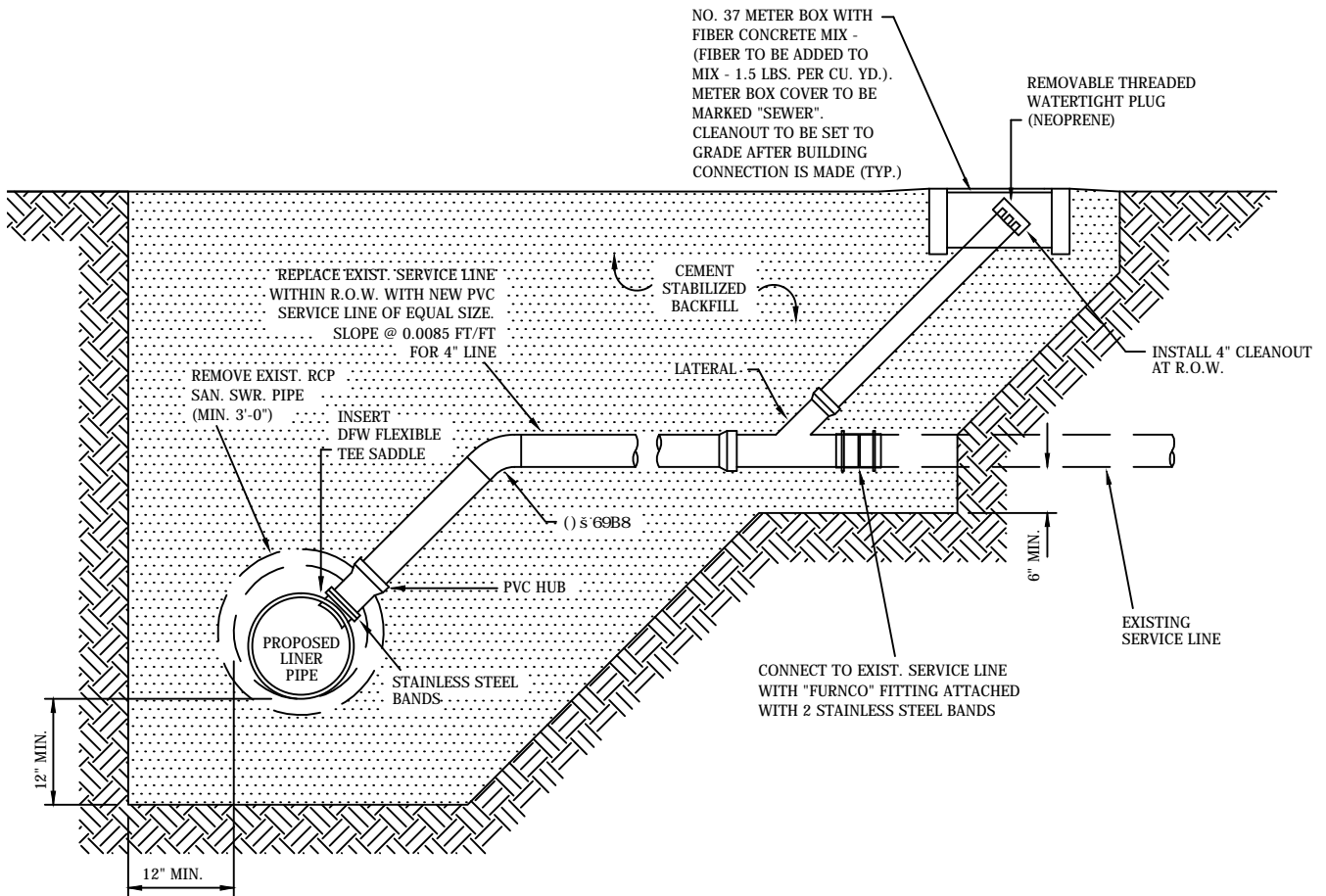
## SANITARY SEWER CLEAN OUT DETAIL



**NOTE:**

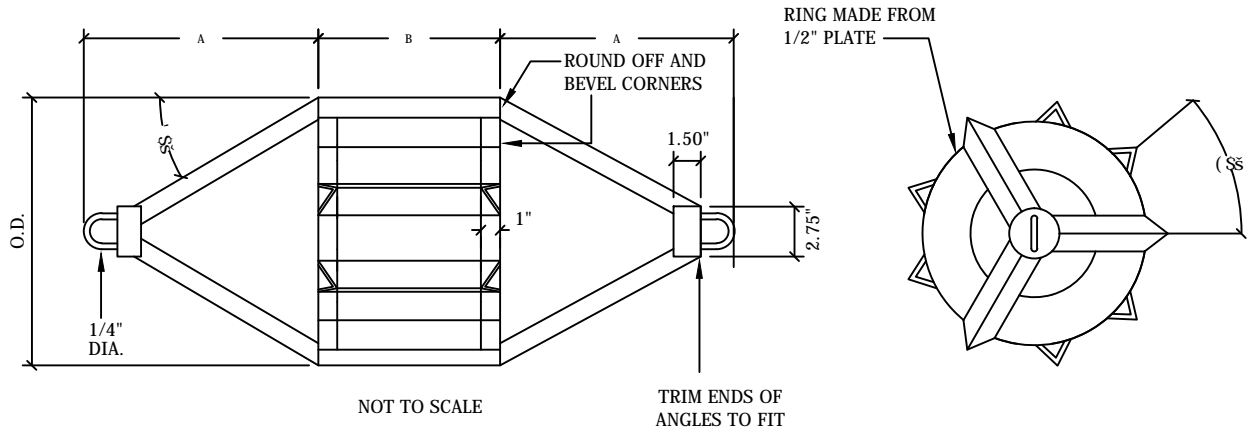
- \* REPLACE 5FT OF EXISTING SERVICE LINE ON BOTH SIDES OF WYE. USE 4" OR 6" PVC SCH 40 TO MATCH EXISTING SERVICE LINE.
- \* CLEAN OUT TO BE ACCESSABLE FROM PROPERTY IT SERVES
- \* WRAP FERNCO'S AND 2-WAY CLEANOUT IN STABILIZED SAND OR DRY SACKRETE
- \* NO. 37 METER BOX WITH FIBER CONCRETE MIX - (FIBER TO BE ADDED TO MIX - 1.5 LBS. PER CU. YD.). METER BOX COVER TO BE MARKED "SEWER". CLEAN OUT TO BE SET TO GRADE AFTER BUILDING CONNECTION IS MADE. (TYP)

## INSTALLATION OF A CLEAN OUT ON AN EXISTING SANITARY SEWER SERVICE CONNECTION



## TYPICAL SANITARY SEWER SERVICE LINE REPLACEMENT ON SLIP LINED SEWER MAIN

GO, NO-GO DEFLECTION TESTING MANDREL  
 CONSTRUCTED FROM 1/2 - INCH ANGLE IRON



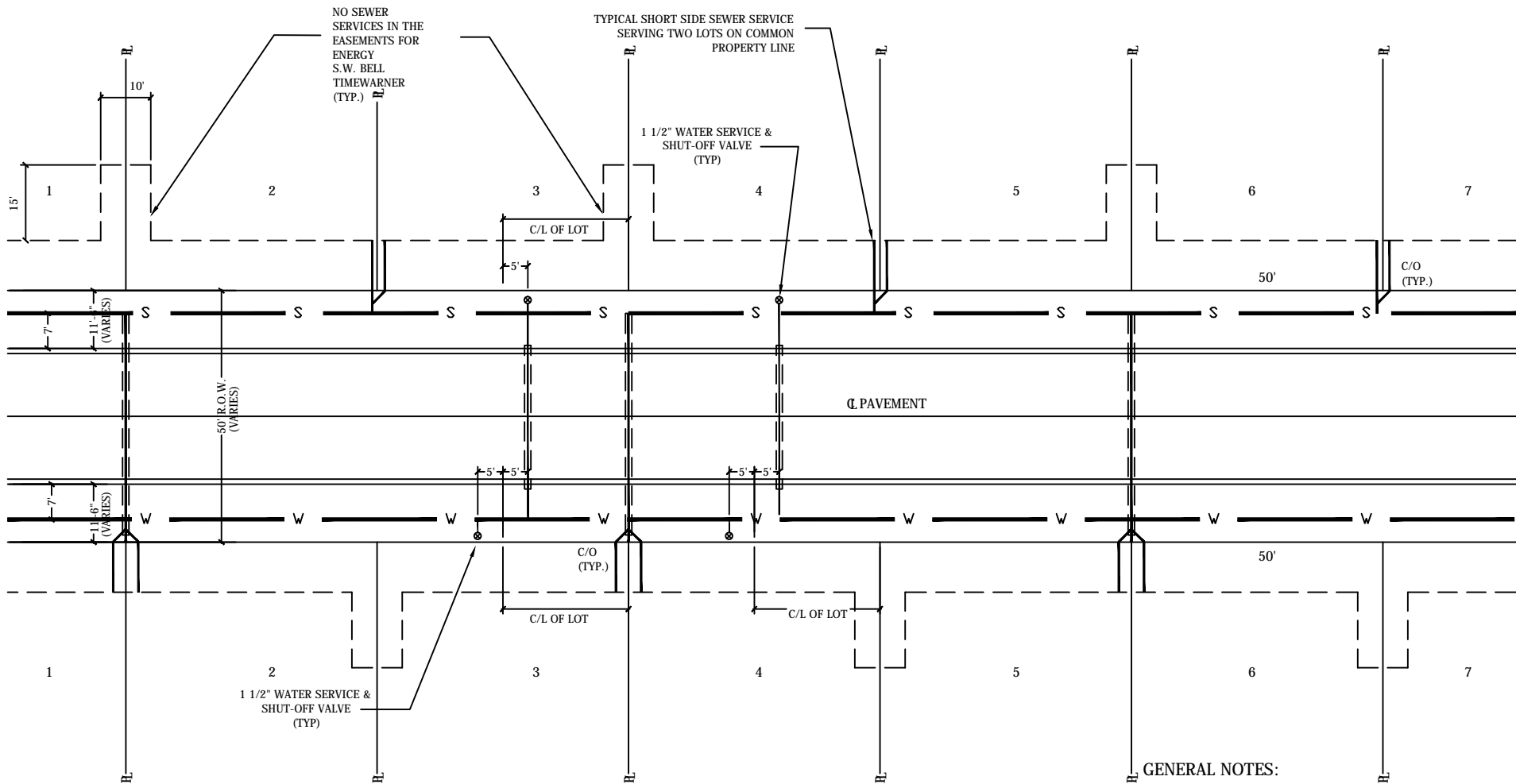
NOTE:

AFTER WELDING IS COMPLETED, TRUE THE OUTSIDE  
 DIAMETER DIMENSION FOR THE FULL LENGTH OF "B"  
 TO ( $\pm$ ) 0.010" BY TOOL AND LATHE OR GRINDING

SIZE	A (inch)	B (inch)	Mandrel Outside Diameter (in.) For 7 1/2 % Deflection			Ring Outside Diameter (in.)			For Straight Wall-PVC	
			PSP DR 42	PSM DR 42	PSM DR 35	PSP DR 41	PSM DR 42	PSM DR 35	NOMINAL SIZE	MIN. I.D. OF PIPE
4	2.24	4	3.55		3.59	2.84		2.84	4	3.88
6	3.76	4	5.35		5.34	4.62		4.59	6	5.77
8	5.33	6	6.96	7.18	7.15	6.25	6.47	6.39	8	7.73
10	6.88	6	8.70	8.97	8.94	7.99	8.26	8.17	10	9.666
12	8.35	8	10.45	10.60	10.64	9.74	9.97	9.86	12	11.50
15	10.52	9	13.05		13.15				15	14.22
18	12.92	10			15.92				18	17.21
21	15.39	10			18.77				21	20.29
24	17.42	10			21.11				24	22.826
27	19.75	10			23.80				27	25.725

## TYPICAL MANDREL DETAIL

CITY OF BEAUMONT  
 WATER UTILITIES DEPARTMENT  
 N.T.S.



**GENERAL NOTES:**

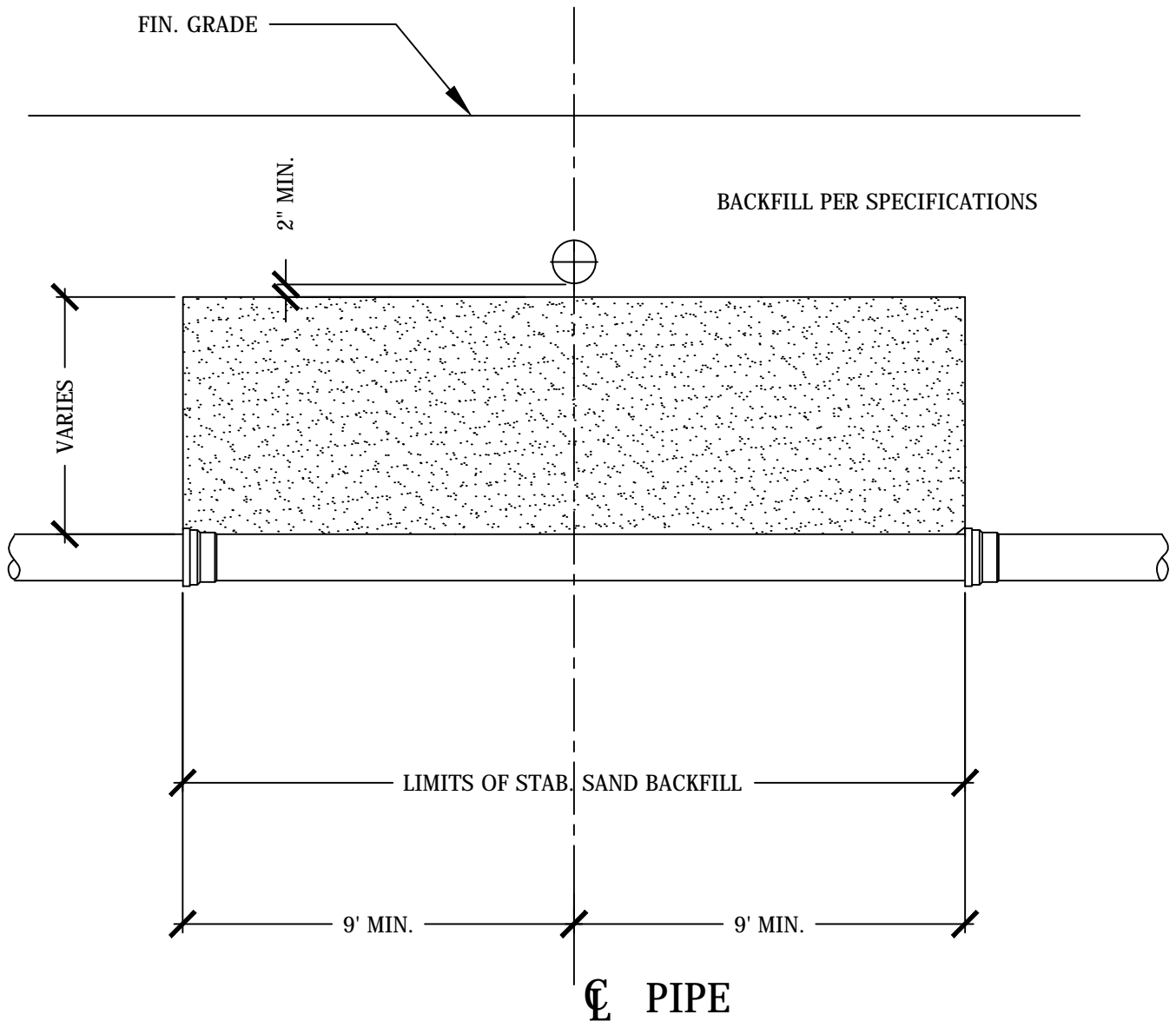
1. ALTERNATE SANITARY SEWER CONNECTIONS WITH ENERGY, S.W. BELL, AND TIMEWARNER EASEMENTS.
2. WATER SERVICES ARE TO BE LOCATED 5' TO THE RIGHT OF THE CENTER LINE OF THE LOT.
3. SEE APPENDIX II FOR ALL OTHER DESIGNATED UTILITY LOCATIONS.

## TYPICAL LONG AND SHORT SIDE WATER AND SANITARY SEWER SERVICE CONNECTION

CITY OF BEAUMONT  
WATER UTILITIES DEPARTMENT  
N.T.S.

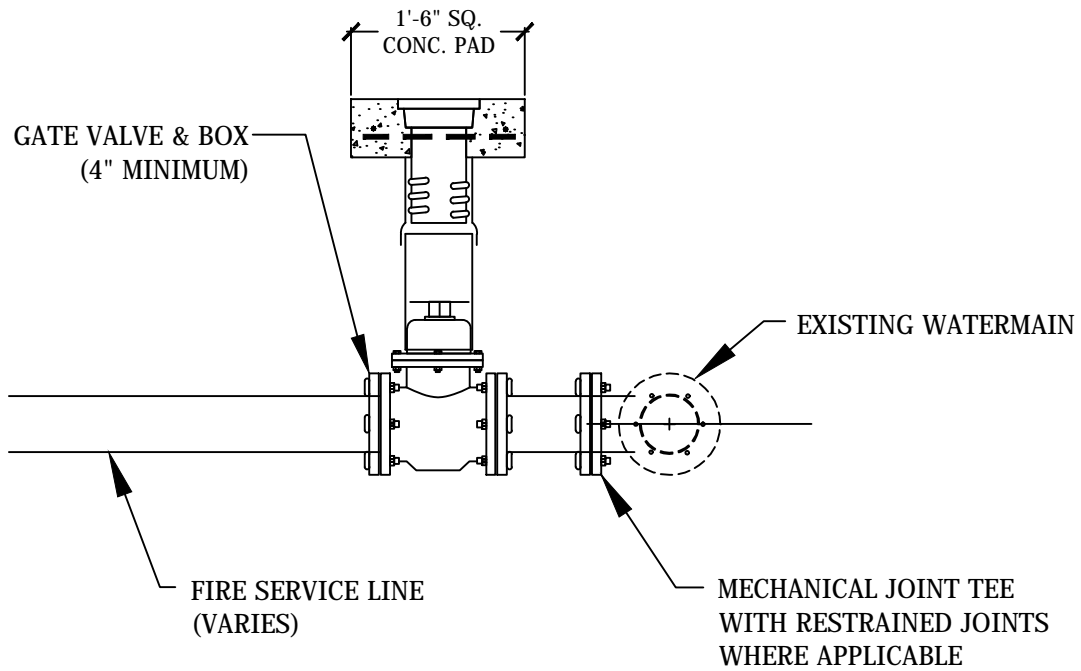
**NOTE:**

SEPARATION DISTANCES SHALL BE BASED ON  
STATE AND FEDERAL REGULATIONS.



**TYPICAL WATER AND SANITARY SEWER  
MAIN CROSSING**

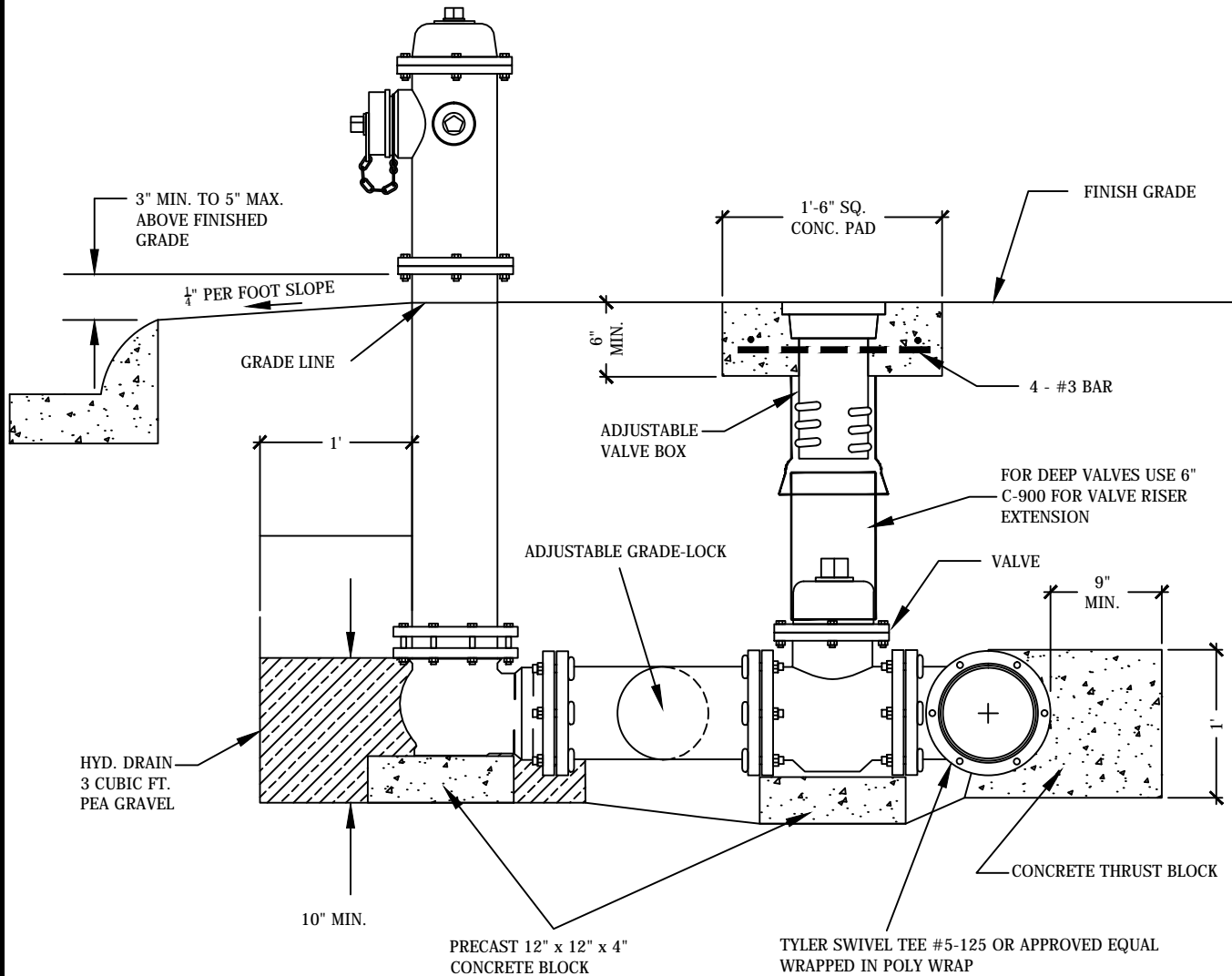




## TYPICAL FIRE SERVICE LINE CONNECTION

CITY OF BEAUMONT  
WATER UTILITIES DEPARTMENT  
N.T.S.

SEE SPEC. SHEET 808.01  
SPECIAL REQUIREMENTS FOR  
APPROVED FIRE HYDRANT



## TYPICAL FIRE HYDRANT INSTALLATION

CITY OF BEAUMONT  
WATER UTILITIES DEPARTMENT  
N.T.S.

NOTE:

SET TOP OF METER BOX EVEN WITH GRADE IF ALREADY LANDSCAPED. IF NOT LANDSCAPED SET TOP OF BOX 2 INCHES ABOVE TOP OF CURB. (BY CITY FORCES).

THE PLUMBING CONTRACTOR IS TO MARK THE METER BOX LOCATION WITH A STAKE & FLAGGING. LABEL WHAT SIZE METER WILL BE INSTALLED ON THE STAKE.

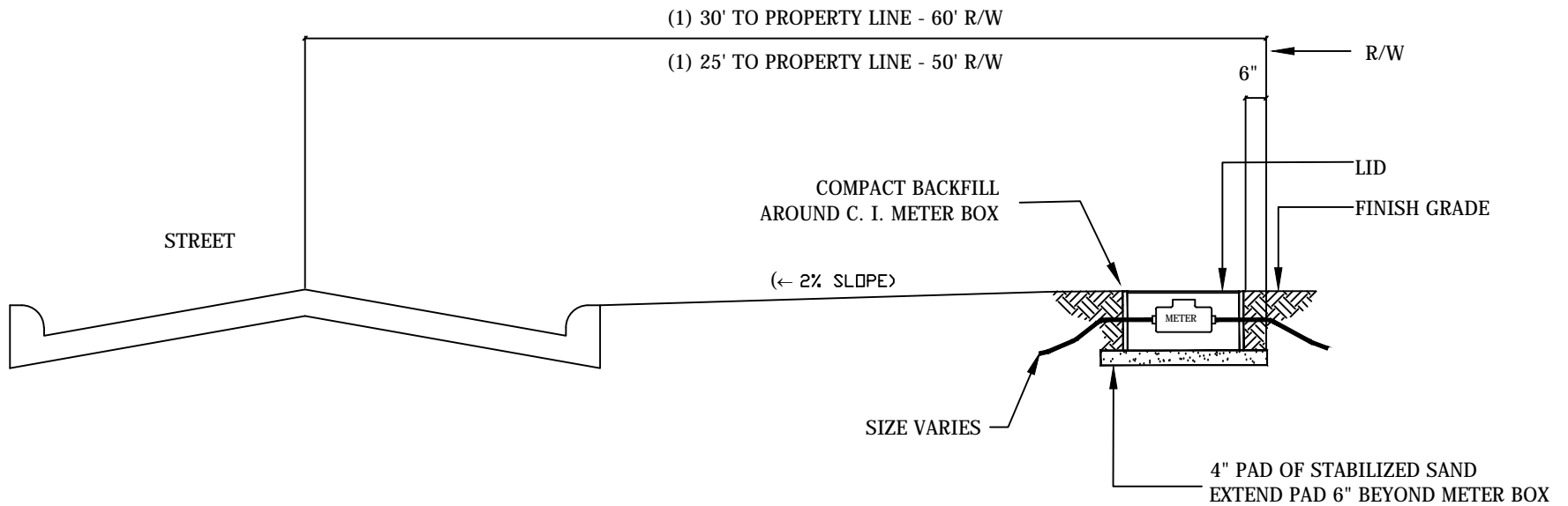
NOTE:

SERVICE LINE SIZES WILL VARY DEPENDING ON THE SIZE OF METER:

1" METER = 1 ½" SERVICE LINE

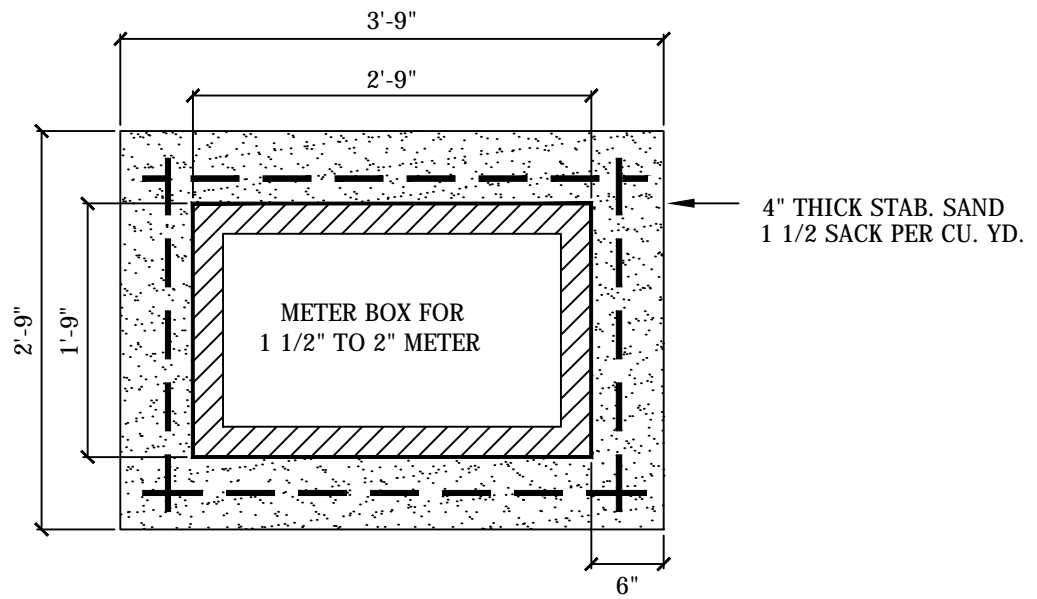
1 ½" METER = 2" SERVICE LINE

2" METER = 2" SERVICE LINE

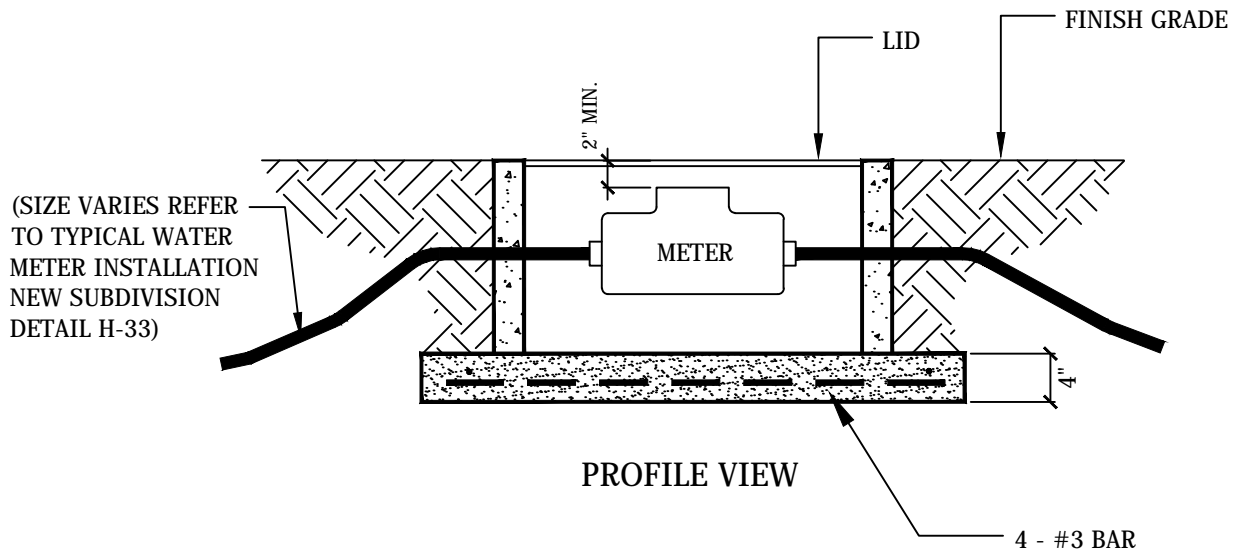


## TYPICAL WATER METER INSTALLATION NEW SUBDIVISION

CITY OF BEAUMONT  
WATER UTILITIES DEPARTMENT  
N.T.S.

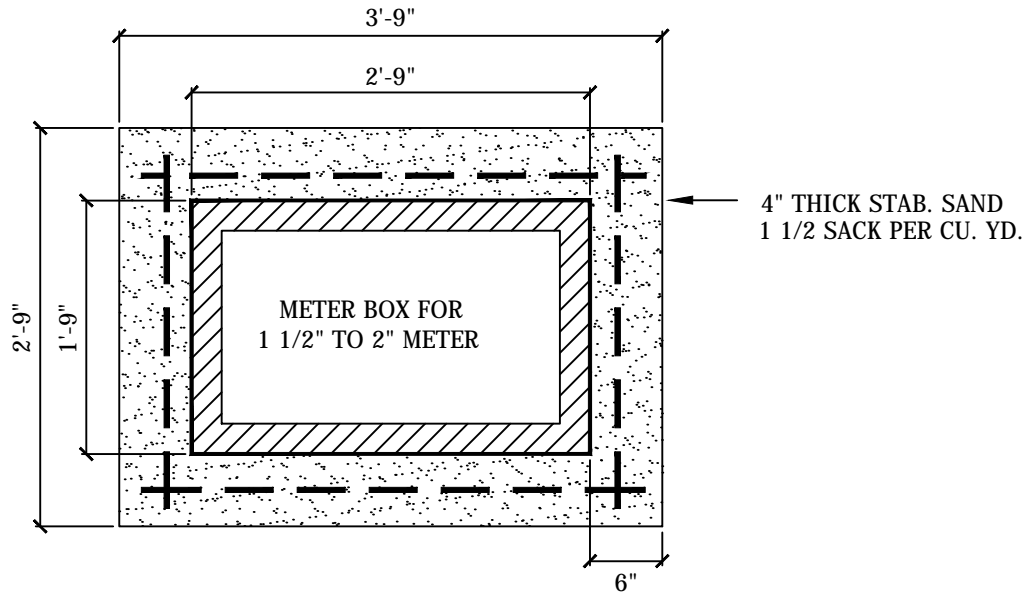


PLAN VIEW

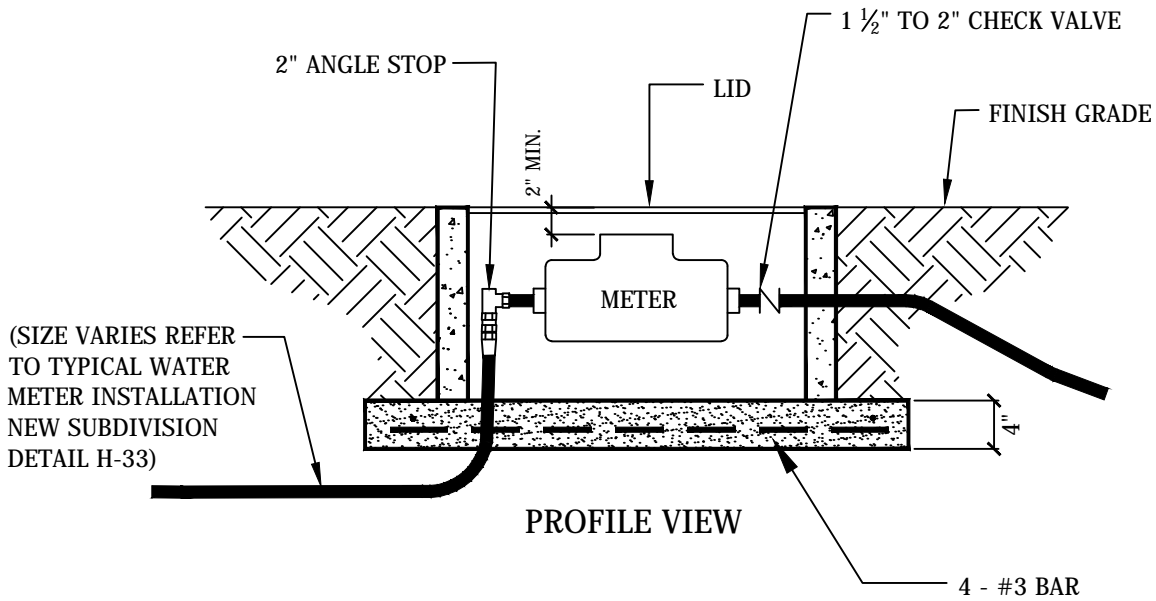


PROFILE VIEW

**TYPICAL METER INSTALLATION  
OF 1 1/2" TO 2" METER  
USING A CAST IRON METER BOX**

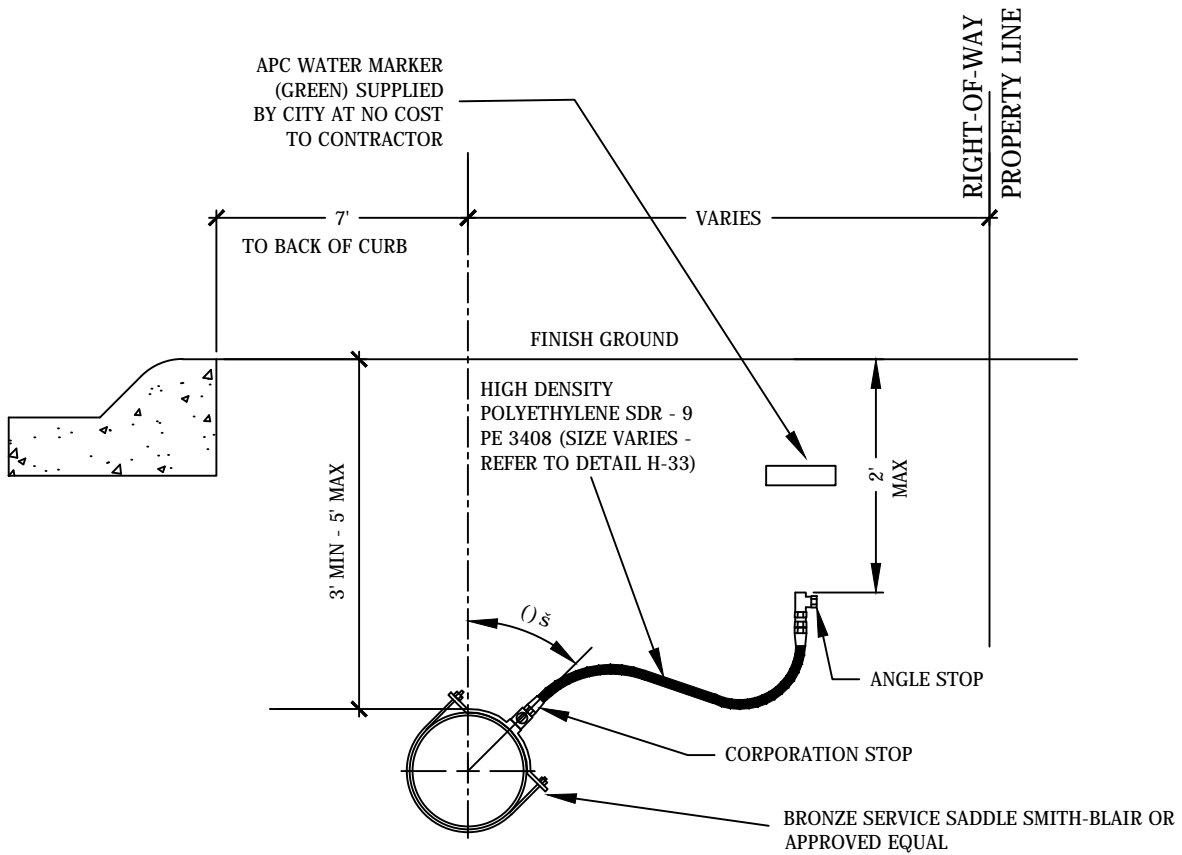


PLAN VIEW



PROFILE VIEW

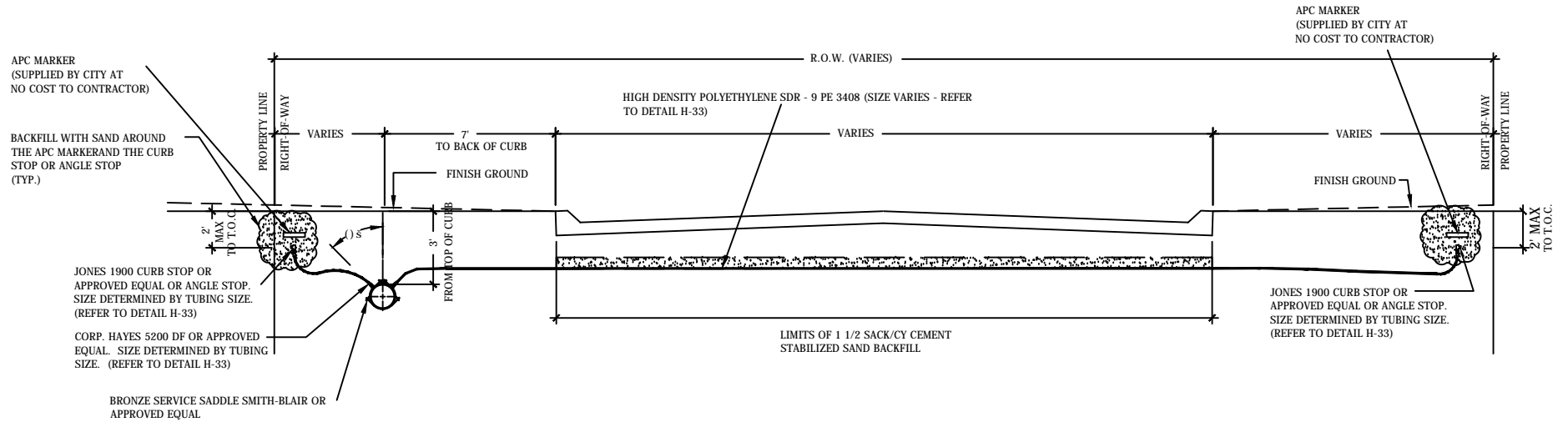
**TYPICAL METER INSTALLATION  
OF 1 1/2" TO 2" METER  
USING A CONCRETE METER BOX**



**GENERAL NOTES:**

1. DOUBLE STRAP ALL 1 1/2" & 2" ON 6" PIPE AND ABOVE.
2. CLOY TWIN SEAL TAPPING SADDLE STYLE 3401 OR APPROVED EQUAL FOR 2" OR 3" PVC PIPE.
3. FOR 2" SDR-26 MAINS; USE A BRASS TEE AND A CURB STOP.

**TYPICAL WATER SERVICE CONNECTION**

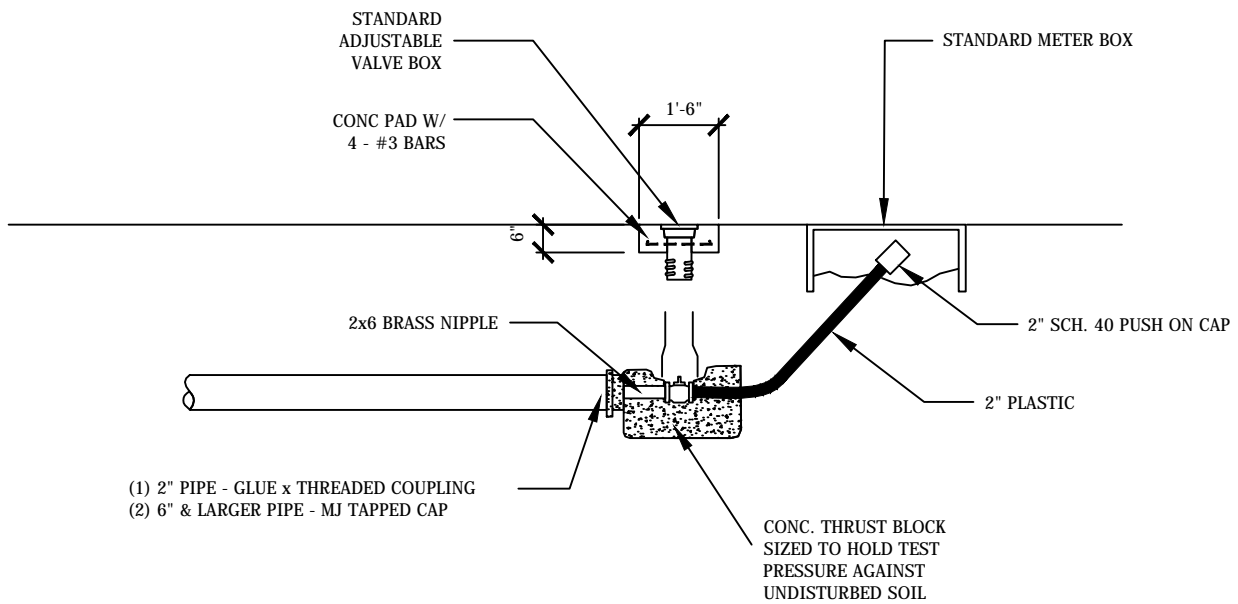


GENERAL NOTES:

1. DOUBLE STRAP ALL 1 1/2" & 2" ON 6" PIPE AND ABOVE.
2. SERVICE LINE SIZES WILL VARY DEPENDING ON THE SIZE OF METER.
3. CLOW TWIN SEAL TAPPING SADDLE STYLE 3401 OR APPROVED EQUAL FOR 2" OR 3" PVC PIPE.
4. FOR 2" SDR-26 MAINS; USE A BRASS TEE AND A CURB STOP.
5. ALL MEASUREMENTS FROM TOP AND BACK OF CURB.
6. LEAVE CURB STOP ABOVE OR ANGLE STOP ABOVE GROUND UNTIL PRESSURE TEST, FLOW TEST, LOCATION MARKED ON CURB, "W" STAMPED ON CURB OR CHISELED ON CURB AND LOCATOR DISC'S DELIVERED.

## TYPICAL LONG AND SHORT SIDE WATER SERVICE CONNECTION AND STREET CROSSING DETAILS

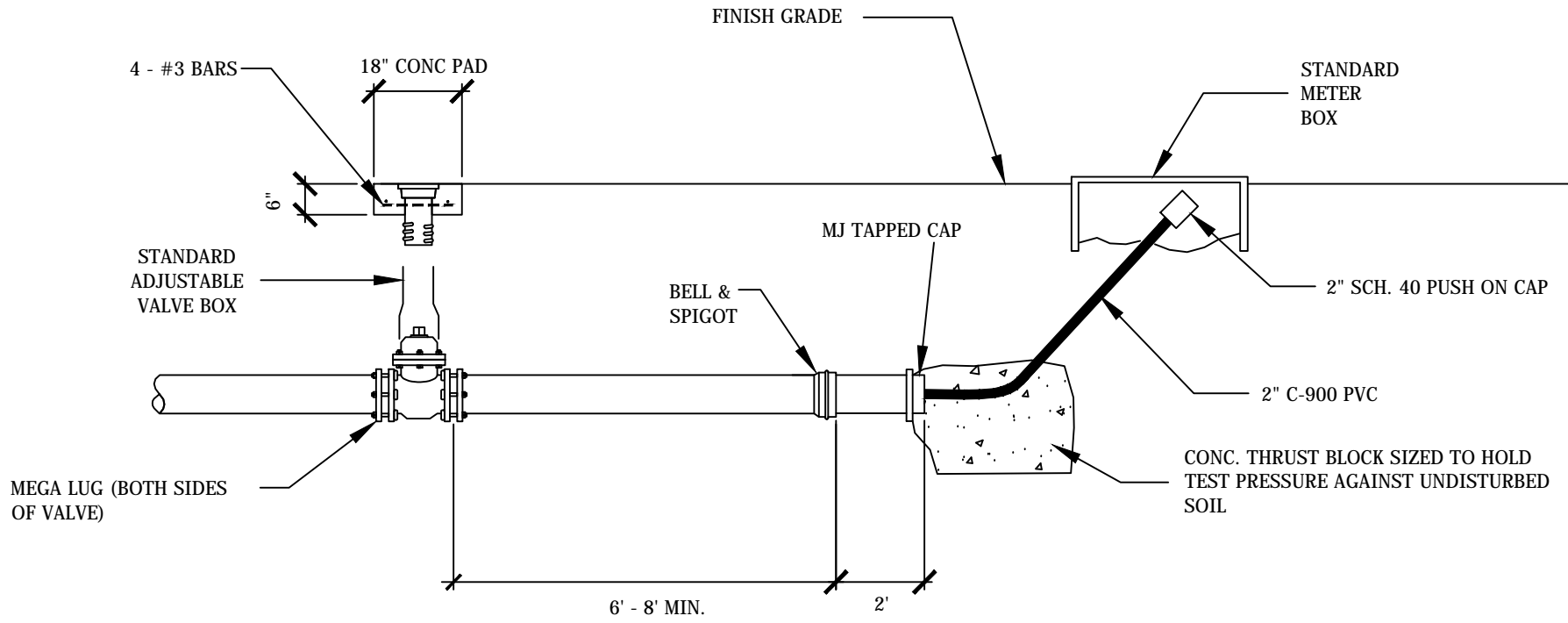
CITY OF BEAUMONT  
WATER UTILITIES DEPARTMENT  
N.T.S.



## PERMANENT FLUSH OUT DETAIL

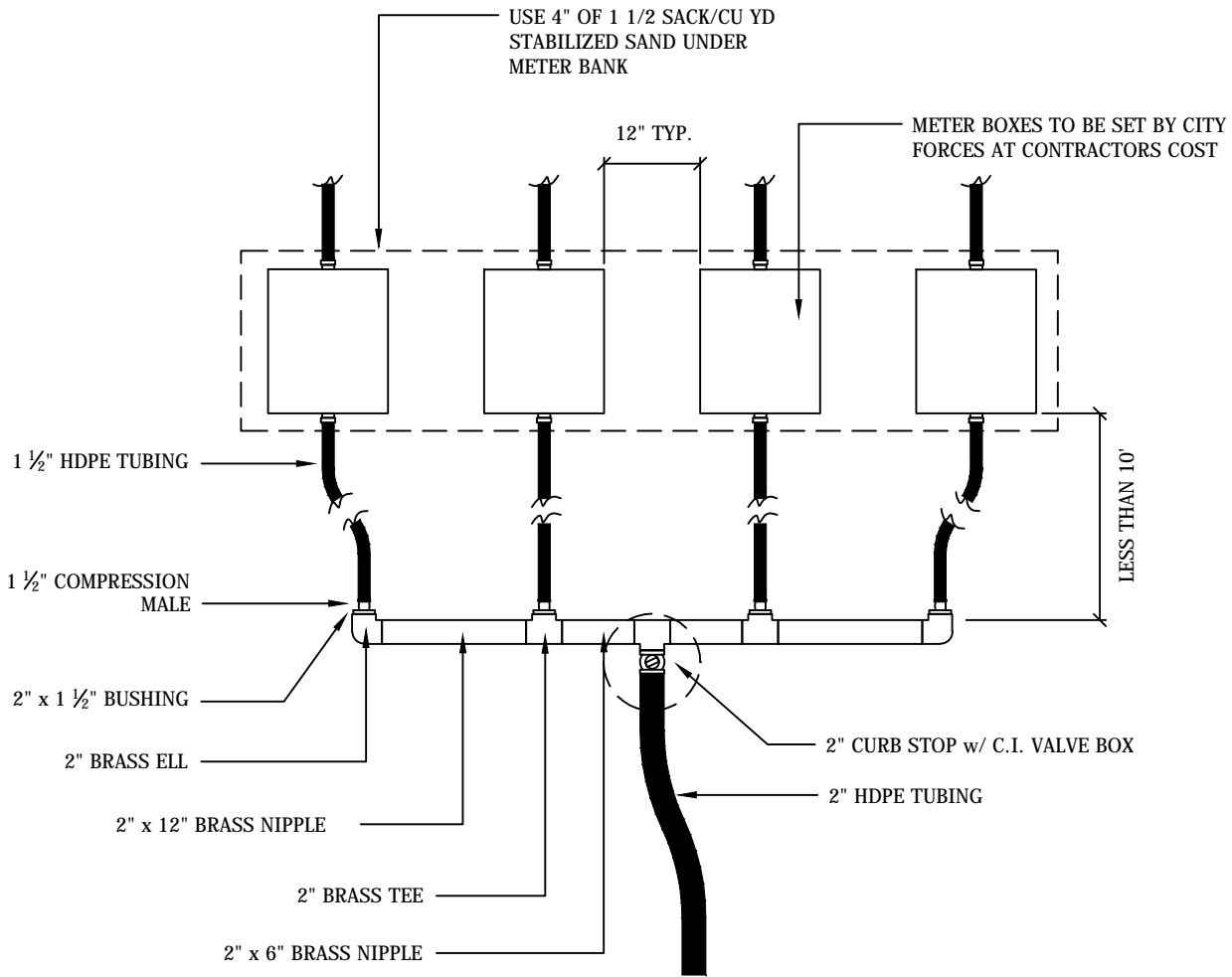
CITY OF BEAUMONT  
WATER UTILITIES DEPARTMENT  
N.T.S.





## TEMPORARY FLUSH OUT DETAIL

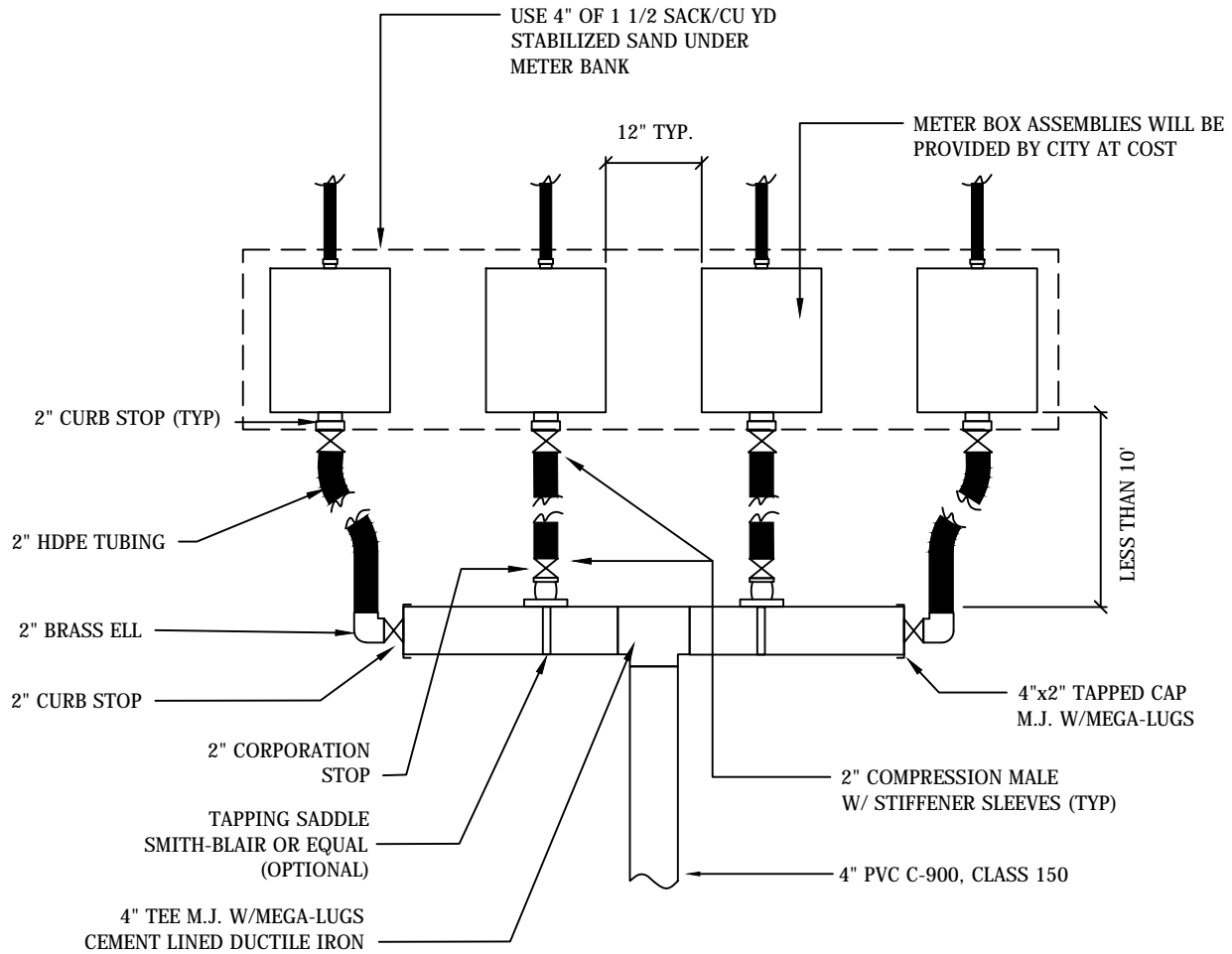
CITY OF BEAUMONT  
 WATER UTILITIES DEPARTMENT  
 N.T.S.



**NOTES:**

- ALL FITTINGS MUST BE BRASS
- NO MORE THAN 8 METERS ON MANIFOLD
- PLACE TOPS OF ALL METER BOXES AND VALVE BOX AT SAME ELEVATION, EVEN WITH GRADE
- IF METER AREA IS SURROUNDED BY CONCRETE THEN METER BANK AREA IS TO BE BACKFILLED WITH SAND & GRAVEL.
- BOLLARDS ARE TO BE SET AT EACH CORNER.

## TYPICAL METER BANK INSTALLATION FOR 1" METERS

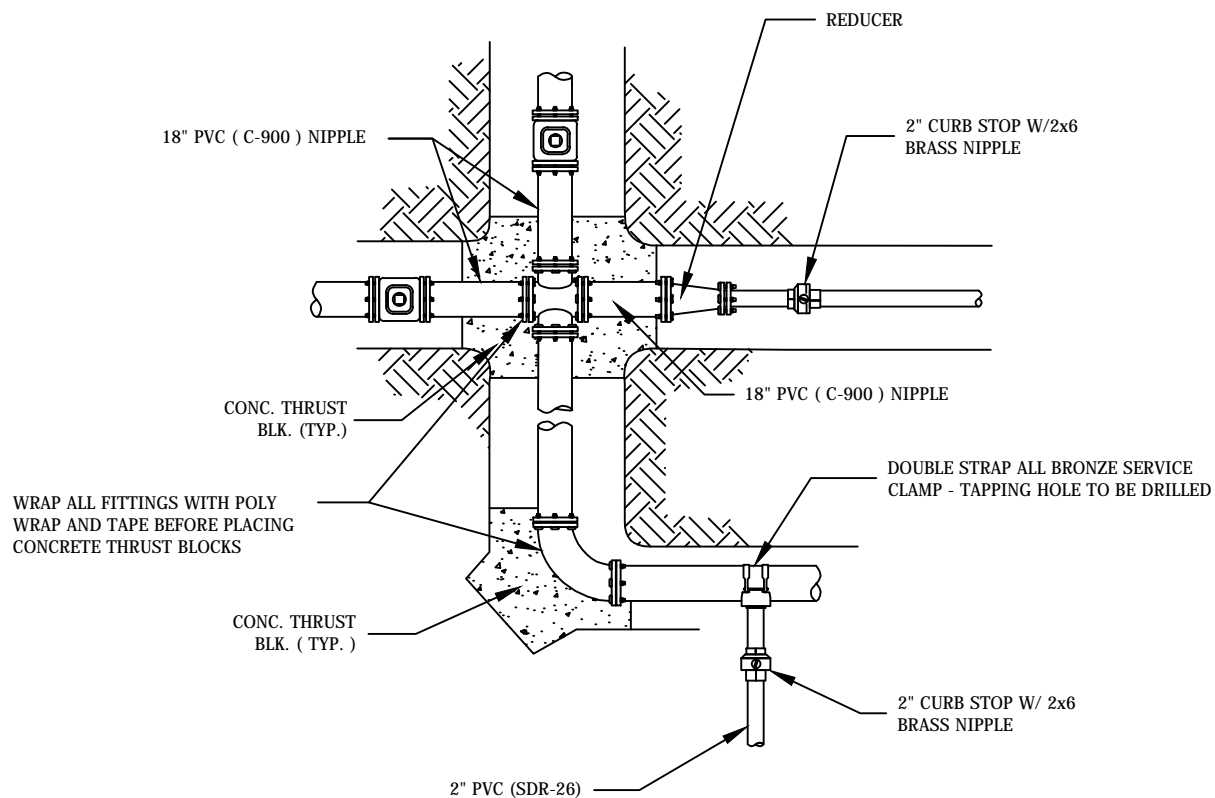


**NOTES:**

- ALL FITTINGS MUST BE BRASS OR CEMENT LINED DUCTILE IRON
- NO MORE THAN 8 METERS ON MANIFOLD
- PLACE TOPS OF ALL METER BOXES AND VALVE BOXES AT SAME ELEVATION, EVEN WITH GRADE
- IF METER AREA IS SURROUNDED BY CONCRETE THEN METER BANK AREA IS TO BE BACKFILLED WITH SAND & GRAVEL.
- BOLLARDS ARE TO BE SET AT EACH CORNER.

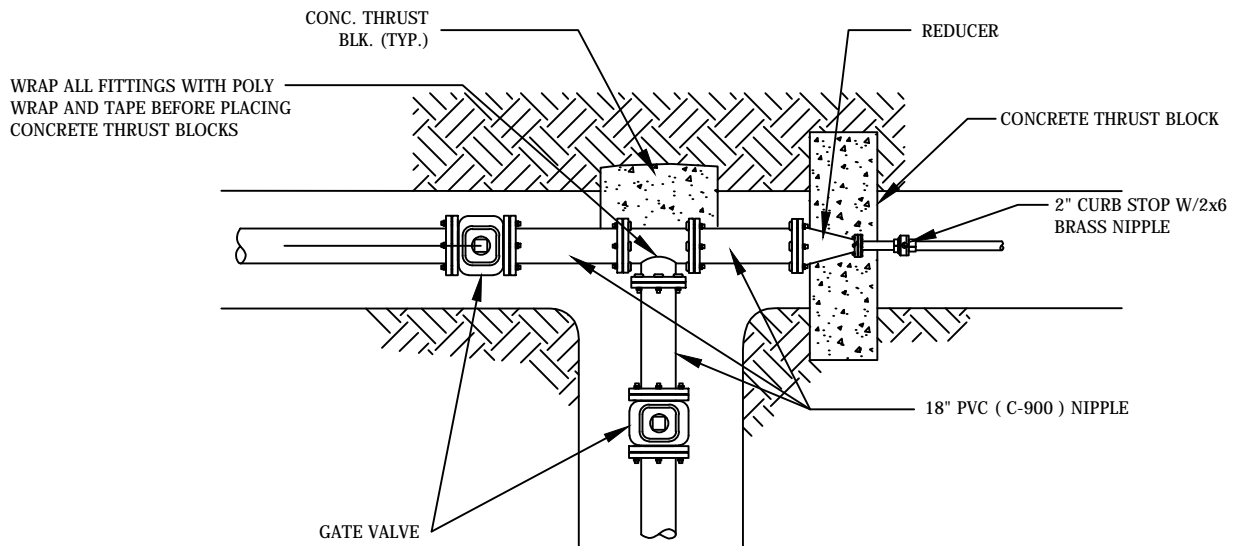
## TYPICAL METER BANK INSTALLATION

FOR 1 1/2" AND 2" METERS



**NOTE:**  
WRAP ALL FITTINGS WITH POLY WRAP AND TAPE

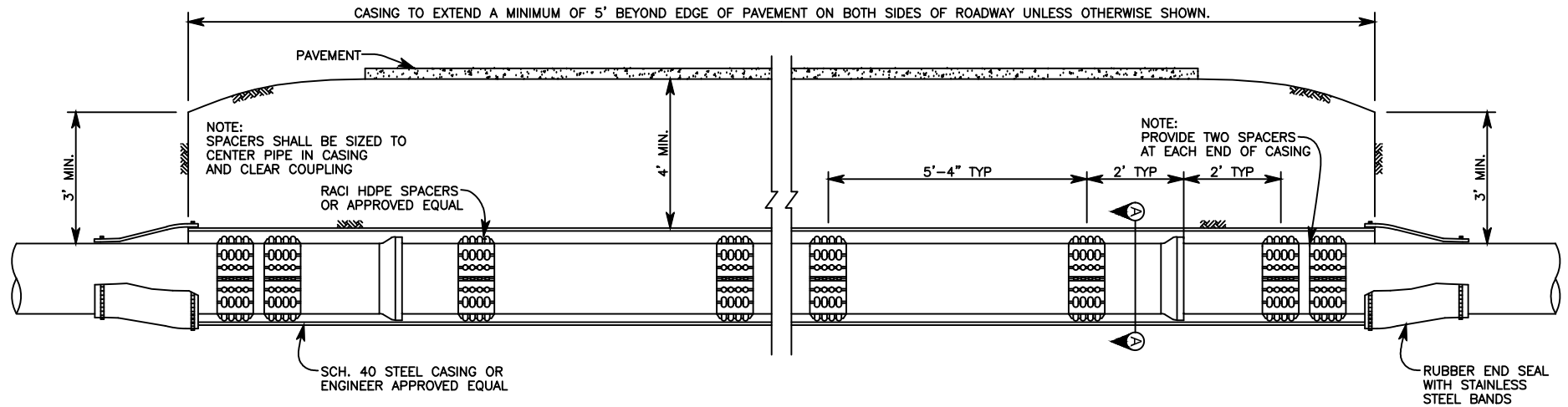
## TYPICAL FITTINGS & CONCRETE THRUST BLOCK INSTALLATION



**NOTE:**

1. ALL BLOCKING TO UNDISTURBED TRENCH WALL
2. WRAP ALL FITTINGS WITH POLY WRAP AND TAPE

## TYPICAL FITTINGS & CONCRETE THRUST BLOCK INSTALLATION

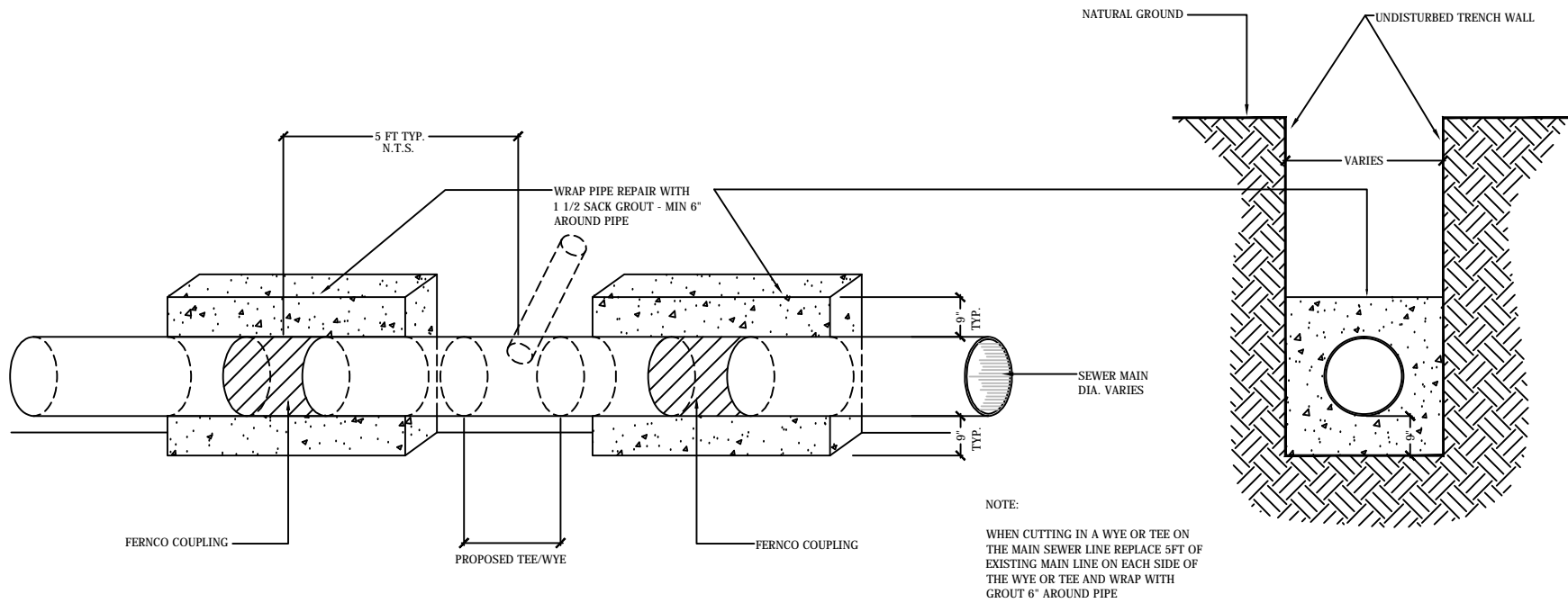


**NOTE:**  
CASING PIPE SIZE TO BE DETERMINED BY THE  
PROPOSED SIZE OF PIPE.

**CASING DETAIL**  
TYPICAL LONGITUDINAL SECTION  
(TUNNEL CONSTRUCTION)

**TYPICAL CASING DETAIL**

CITY OF BEAUMONT  
WATER UTILITIES DEPARTMENT  
N.T.S.

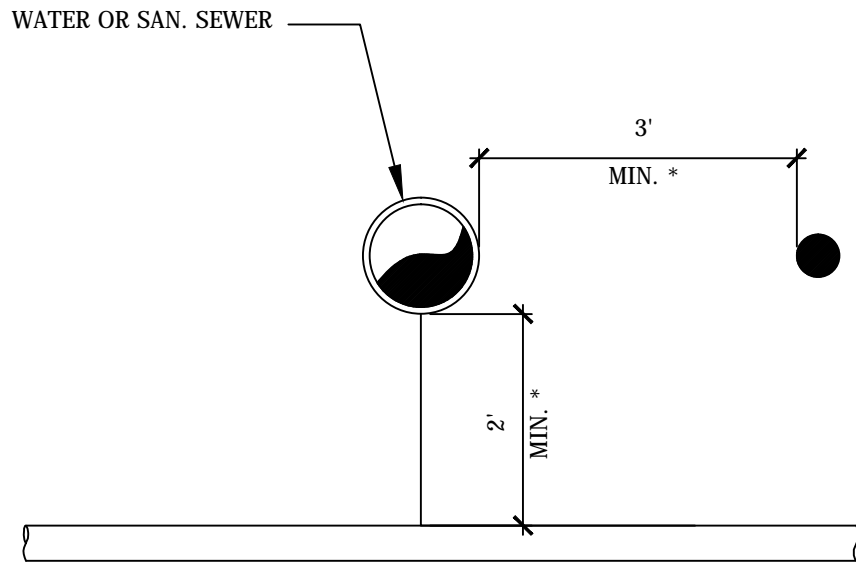


1 - TYPICAL MAIN LINE REPAIR

2 - END VIEW

## MAIN LINE REPAIR DETAIL

CITY OF BEAUMONT  
WATER UTILITIES DEPARTMENT  
N.T.S.

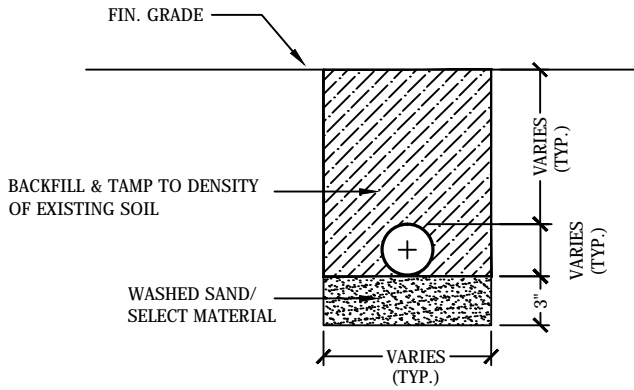


\* MINIMUM CLEARANCE ON ALL UTILITY CROSSINGS

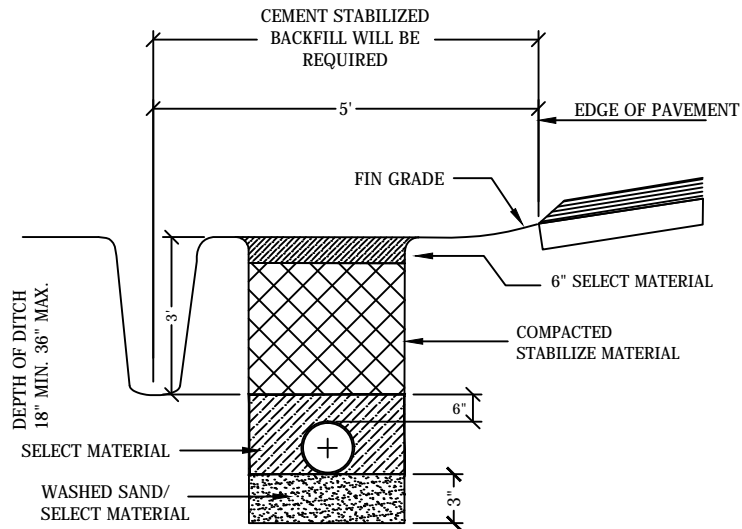
## TYPICAL UTILITY CROSSING

CITY OF BEAUMONT  
WATER UTILITIES DEPARTMENT  
N.T.S.

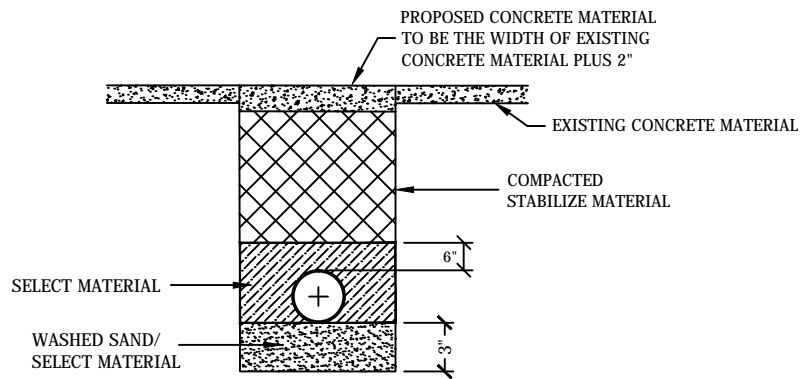




**TYPICAL TRENCH BACKFILLING  
(AWAY FROM ROAD  
RIGHT-OF-WAY)**



**TYPICAL SECTION AT  
EDGE OF ROADWAY**



**TYPICAL TRENCH BACKFILLING  
(UNDER CONCRETE PAVEMENT)**

# TYPICAL ROAD & TRENCH BACKFILLING